
Title

Material Submittal for Fire
Rated Door

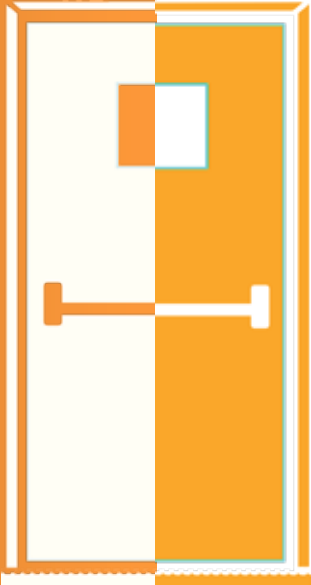
Brand

Bristol

Index

- ***Technical Data Sheets (Catalogues).***
- ***Intertek Certificate.***
- ***ISO Certificate.***
- ***Mill Test Certificate.***
- ***Shipment Conformity Certificate.***
- ***Infill Material (Paper - HoneyComb).***
- ***Hardware.***
- ***Method Statment.***
- ***Previous Approvals.***

***Technical Data
Sheets (Catalogues).***



FIRE RATED DOOR

Honeycomb, Rockwool & Glazed



FIRE DOORS

CONTENT INDEX



	Page
1a INTRODUCTION	3
UL APPROVED FIRE RATED DOORS	5
Honeycomb Fire Rated Door	6
Rockwool Fire Rated Door	7
Optional Features	8
Vision Panel	8
Louver	9
Transom	10
2 INTERTEK APPROVED FIRE RATED DOORS	12
Honeycomb Fire Rated Door	13
Rockwool Fire Rated Door	14
Optional Features	15
Vision Panel	15
Louver	16
3 BM TRADA APPROVED FIRE RATED DOORS	18
Honeycomb Fire Rated Door	19
Rockwool Fire Rated Door	20
Optional Features	21
Vision Panel	21
Louver	22
4 FULL GLAZED FIRE RATED DOORS	24
BM Trada and Intertek Approved Fire Rated Door	25
5 LOUVER	26
Introduction	27
Size and Drawings	28
6 FIRE RATED ACCESS PANEL DOORS	29
Intertek Approved	30
BM Trada Approved	31
7 IRONMONGERY	32
Ironmongery for Fire Rated Doors	33-36
8 DOOR COMPONENTS	37
9 STANDARD DOOR FRAME DETAILS	38
10 DOOR INFILLS	39
11 TECHNICAL DRAWING	40
12 CERTIFICATES	41-44

FIRE DOORS

INTRODUCTION

FIRE DOORS

Fire Doors are doors with fire-resistance rating and play an important role in fire protection and loss prevention.

They are used as part of a passive fire protection system to reduce the spread of fire or smoke between compartments. Fire Doors enable safe escape from a building or structure during events like fire, earthquake, etc. Since Fire Doors have a distinct purpose, they have additional special characteristics than those of ordinary doors.

EASE OF ACCESS

Since fire doors are meant to be the safest exit points in cases of fire, they are usually painted with bright red color to be visible during emergency, and are often attached with push bars for ease of opening during fire panicking.

VISIBILITY

In interior application to separate compartment zones, Fire Doors are most of the times required to be fitted with vision panels so that flames or smoke may be seen and collisions avoided.

FIRE RATING

The most important attribute of Fire Doors is its fire rating. Fire rating is the door's capability to withstand fire and remain intact for the duration. Fire rating is measured in minutes (sometimes hours) the fire door was able to maintain integrity while subjected to fire.

AIR TIGHTNESS

Fire Doors serve as the access between the safe egress and a burning compartment, it is therefore important that fire doors do not permit smoke to the safe side. Fire doors are fitted with smoke seals to address this factor.

STEEL FIRE DOOR

Steel products are rugged, long lasting and offer great endurance through time. They resist environmental stress like heat and humidity that adversely impact other door and frame products. Steel products are easy to maintain and ensure virtually trouble free operation for many years.

Steel door and frame products are also an ideal solution to any degree of security.

To meet the varied needs of the construction industry, **BRISTOL FIRE ENGINEERING (BFE)** manufactures a wide range of steel doors and frames for interior and exterior use. BFE doors are the most reliable door manufactured, by using only the highest quality materials and manufacturing techniques. BFE doors are produced in many sizes, gauges and design to meet the needs or architects, owners requirements and contractors.

A door with a fire-resistance rating (sometimes referred to as a fire protection rating for closures) used as part of a passive fire protection system to reduce the spread of fire and smoke between separate compartments of a structure and to enable safe egress from a building or structure.

ADVANTAGES

1. Fire Rated doors help facilitate the safe and quick evacuation of occupants.
2. Fire Rated doors help minimize damage to the property.
3. Fire Resistant doors prevent the loss of lives.
4. Fire Rated doors Restrict and delay the spread of fire







INTERTEK APPROVED FIRE RATED DOOR

TECHNICAL DATASHEETS



Intertek

BRISTOL

FIRE DOORS

HONEYCOMB FIRE RATED DOOR



HONEYCOMB CORE DOORS

Honeycomb door has a paper kraft core. The core is permanently bonded to the door skins strengthening the structural integrity of the door, enhancing long term performance and durability, while significantly reducing the weight.

STEEL FIRE DOOR

Specifications:

- Type : Single and Double
- Door thickness : 44mm
- Finish : Factory polyester powder coating
- Astragal : On active leaf of double doors
- Top/Bottom Channels : Inverted U-Channel

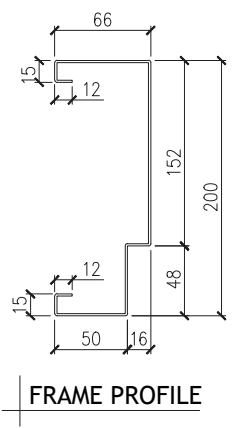
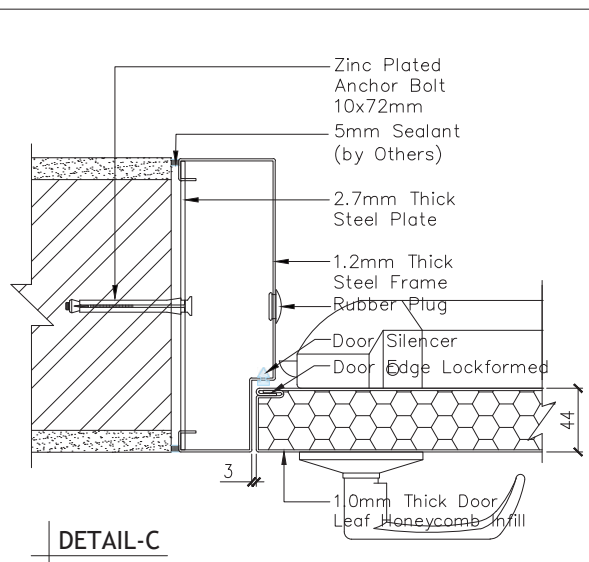
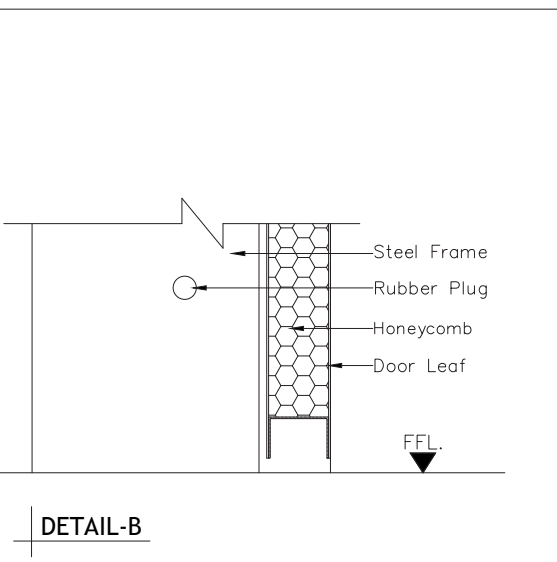
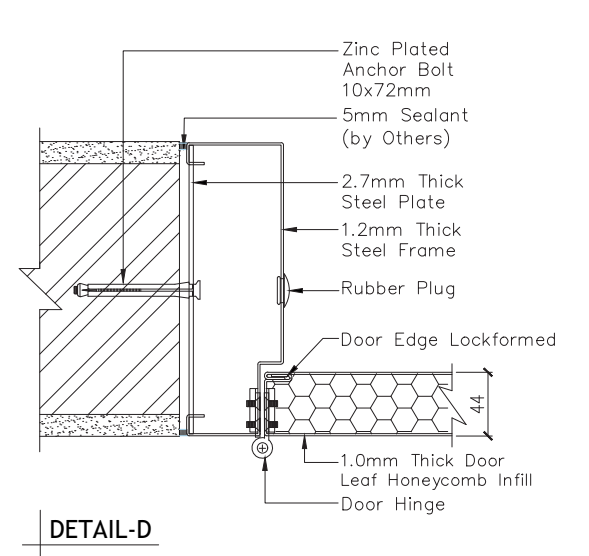
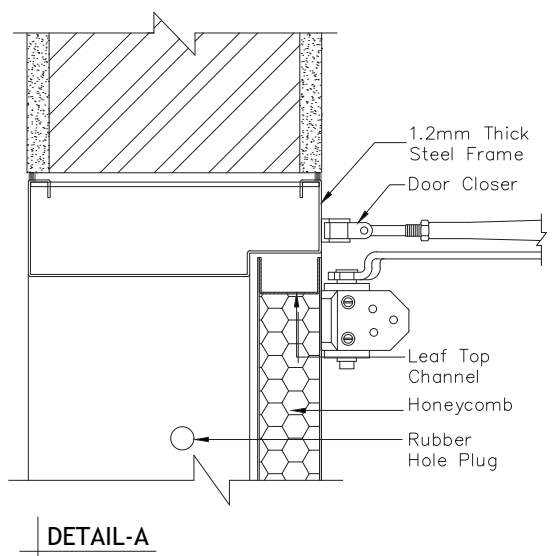
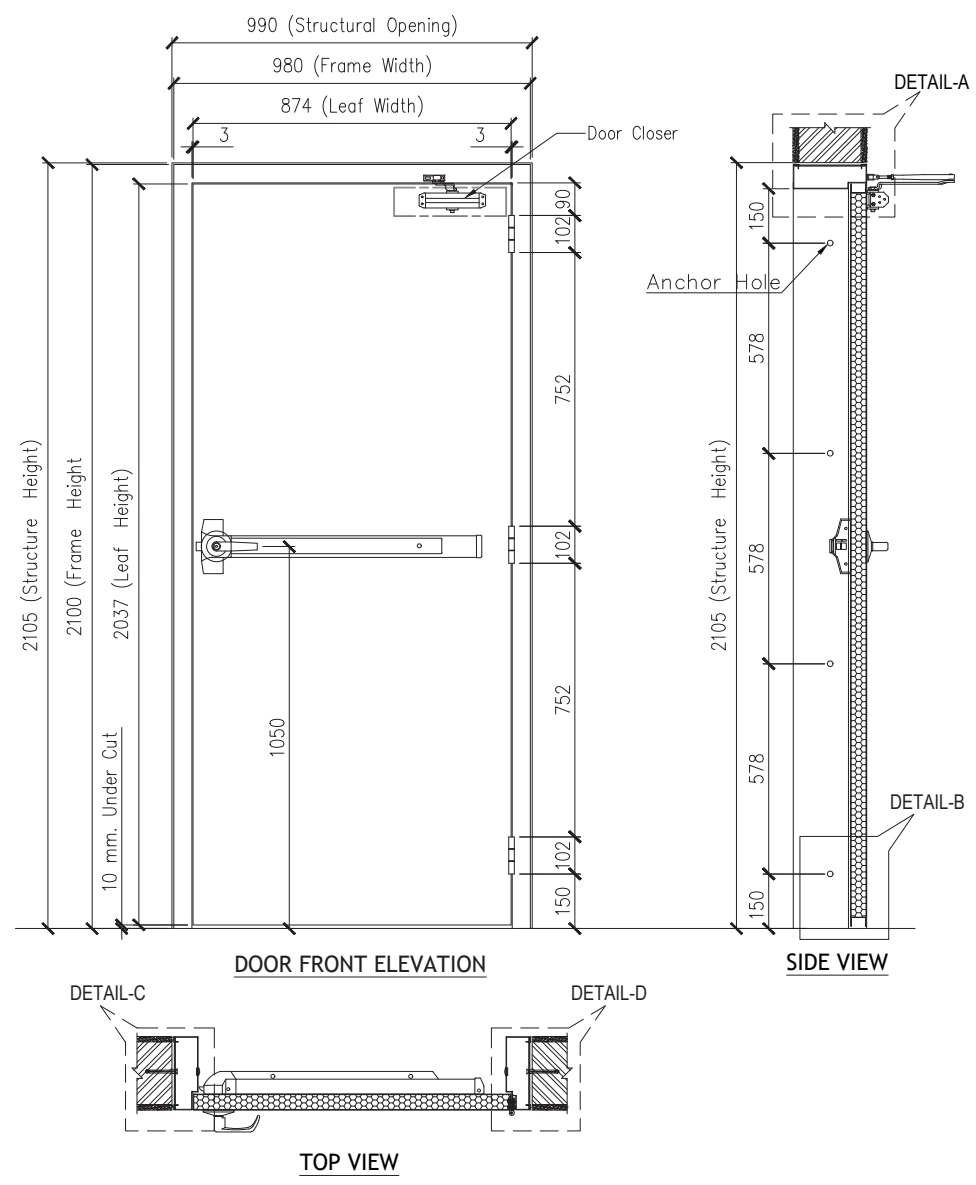


FIRE RATINGS

According to BS 476 standards Integrity Up to 240 minutes

SIZES

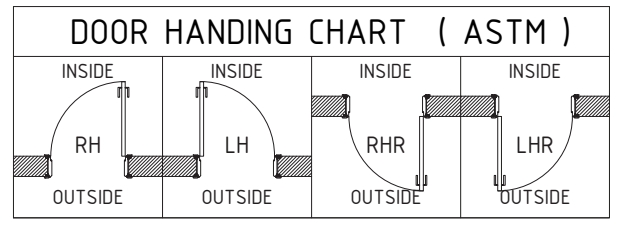
Approval	Standard	Infill	Door	Range	Frame Height (mm)	x	Frame Width (mm)	Fire Rating (min)
Intertek	BS 476	Honey Comb	Double	Max	2176	x	2327	30/60/ 90/120
				Max	2724	x	1859	
Intertek	BS 476	Honey Comb	Double	Max	2182	x	2148	180
				Max	2514	x	1865	
Intertek	BS 476	Honey Comb	Double	Max	2095	x	1790	240
Intertek	BS 476	Honey Comb	Single	Max	2176	x	1287	30/60/ 90/120
				Max	2724	x	1028	
Intertek	BS 476	Honey Comb	Single	Max	2182	x	1188	180
				Max	2514	x	1031	
Intertek	BS 476	Honey Comb	Single	Max	2100	x	980	120



RAL COLOR - 7032 TEXTURE

HARDWARE SET-A		(SINGLE DOOR)	DOOR QUANTITY-270 Nos.			
Sl#	Item Name	Description	Mfr	Finish	Qty	Unit
1	Ball Bearing Hinges	DDSS001 (4"x3"x3mm)	D&D	SSS	3	Each
2	Touch Bar Panic Latch	DT1500RA	Finley	SIL	1	Each
3	External Trim	017P	Oubao	SSS	1	Each
4	Door Closer	DDDC018	D&D	SIL	1	Each
5	Door Stopper	DDDS001	D&D	SSS	1	Each

TOTAL QUANTITY - 305 NOS.



R0	ISSUED FOR PRODUCTION	30/03/23	GEORGE
REV.	DESCRIPTION	DATE	CHECKED

APPROVAL STAMP & SIGNATURE

APPROVAL: UL BS
INTERTEK

LOCATION	QTY
AS PER SCHEDULE	305 Nos.

KEY SPECIFICATIONS	
DOOR LEAF	1.0MM GI SHEET - 44mm THK.
FRAME	1.2MM GI SHEET
LEAF INFILL	HONEYCOMB
LEAF EDGE	LOCKFORMED
FIRE RATING	120 MIN.
FRAME PROFILE	AS-SHOWN

Contractor
AZEIDK FOR SAFETY EQUIPMENT

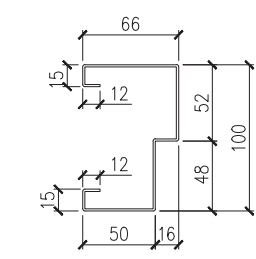
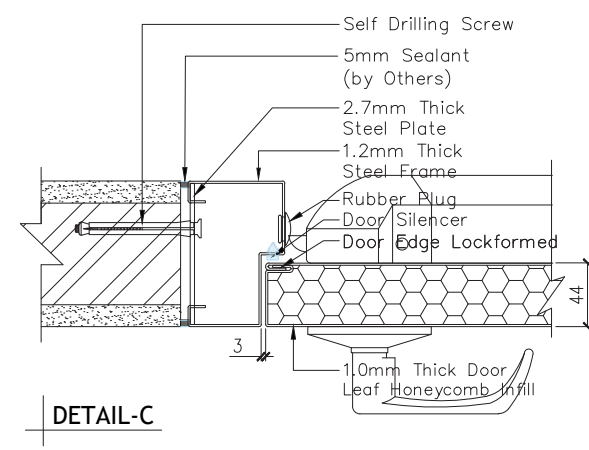
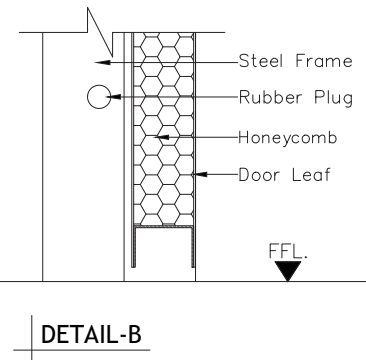
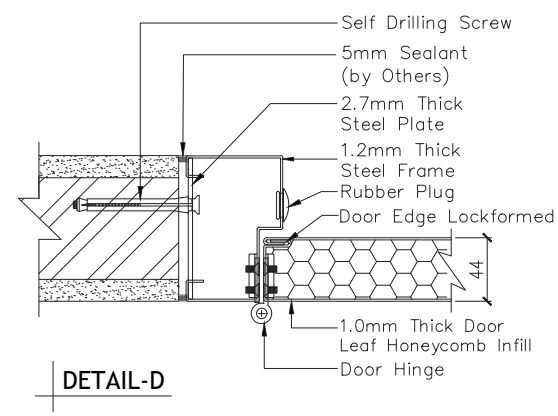
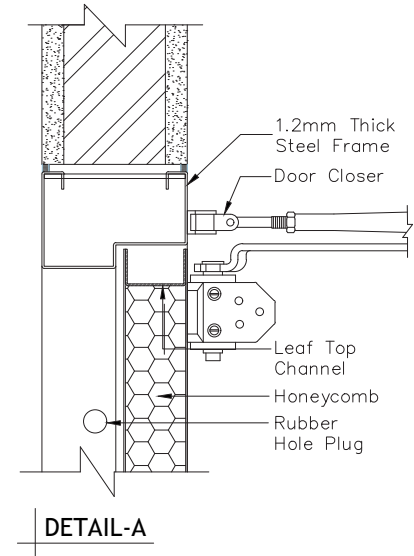
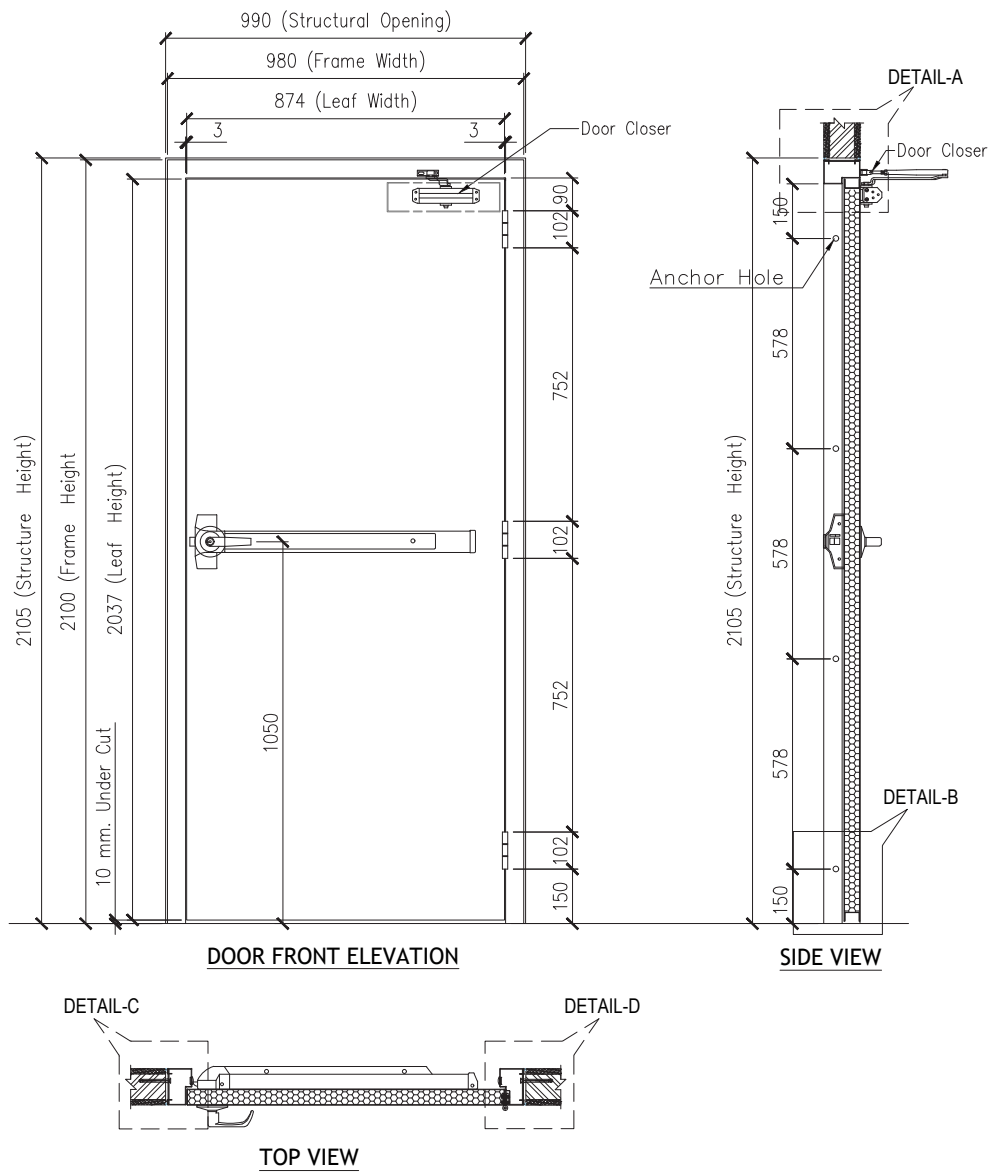
Project
REYADH, SAUDI ARABIA

Reference
BRFD-23-FD-0315-R0

BRISTOL مهندسون في مجال السلامة
FIRE ENGINEERING L.L.C.
P.O. BOX 74582, DUBAI, U.A.E Tel. 04-3472426, Fax. 04-3472363

TITLE
HOLLOW METAL STEEL DOOR
ELEVATION, SECTION & DETAIL

KHALID DESIGN BY	GEORGE CHECKED BY	M.DE APPROVED BY
SCALE AS-SHOWN	SHEET A3	DATE 30-03-2023
DWG. No. BRFD-PD-23-0315-01		REV. R0

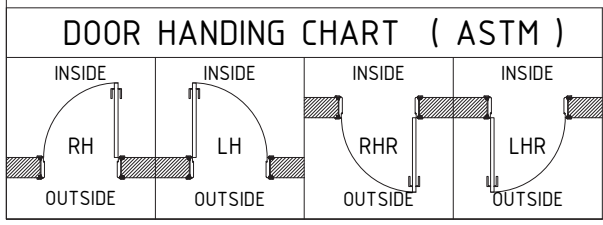


RAL COLOR - 7032 TEXTURE

FRAME PROFILE

HARDWARE SET-A		(SINGLE DOOR)	DOOR QUANTITY-270 Nos.			
SI#	Item Name	Description	Mfr	Finish	Qty	Unit
1	Ball Bearing Hinges	DDSS001 (4"x3"x3mm)	D&D	SSS	3	Each
2	Touch Bar Panic Latch	DT1500RA	Finley	SIL	1	Each
3	External Trim	017P	Oubao	SSS	1	Each
4	Door Closer	DDDC018	D&D	SIL	1	Each
5	Door Stopper	DDDS001	D&D	SSS	1	Each

TOTAL QUANTITY - 100 NOS.



R0	ISSUED FOR PRODUCTION	30/03/23	GEORGE
REV.	DESCRIPTION	DATE	CHECKED

APPROVAL STAMP & SIGNATURE

APPROVAL: UL BS
INTERTEK

LOCATION	QTY
AS PER SCHEDULE	100 Nos.

KEY SPECIFICATIONS

DOOR LEAF	1.0MM GI SHEET - 44mm THK.
FRAME	1.2MM GI SHEET
LEAF INFILL	HONEYCOMB
LEAF EDGE	LOCKFORMED
FIRE RATING	120 MIN.
FRAME PROFILE	AS-SHOWN

Contractor
AZEIDK FOR SAFETY EQUIPMENT

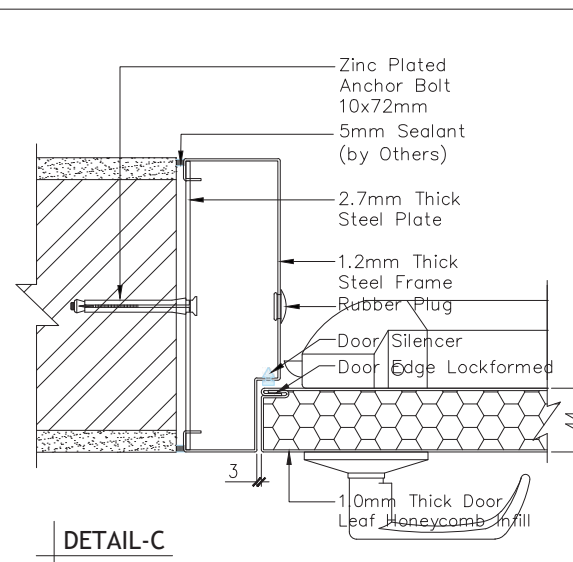
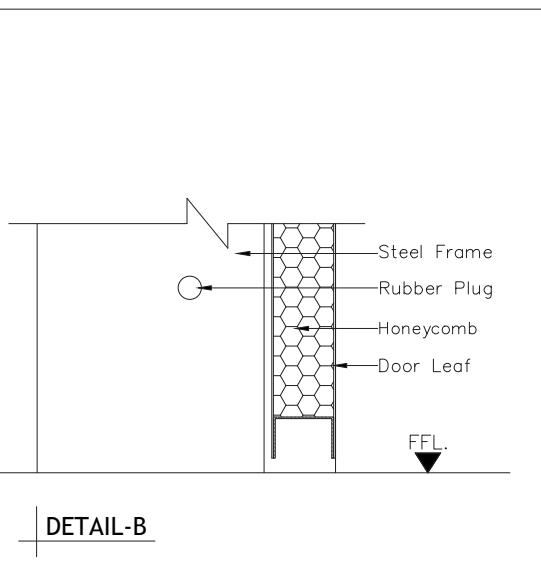
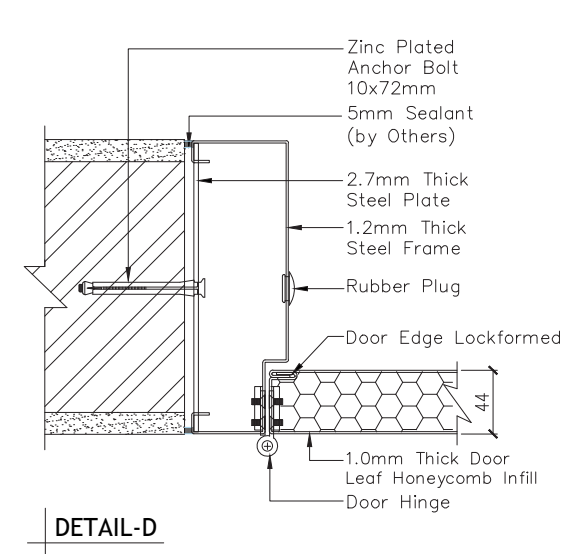
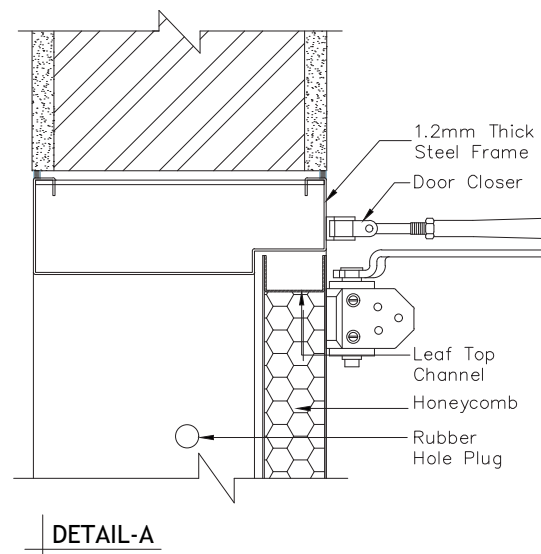
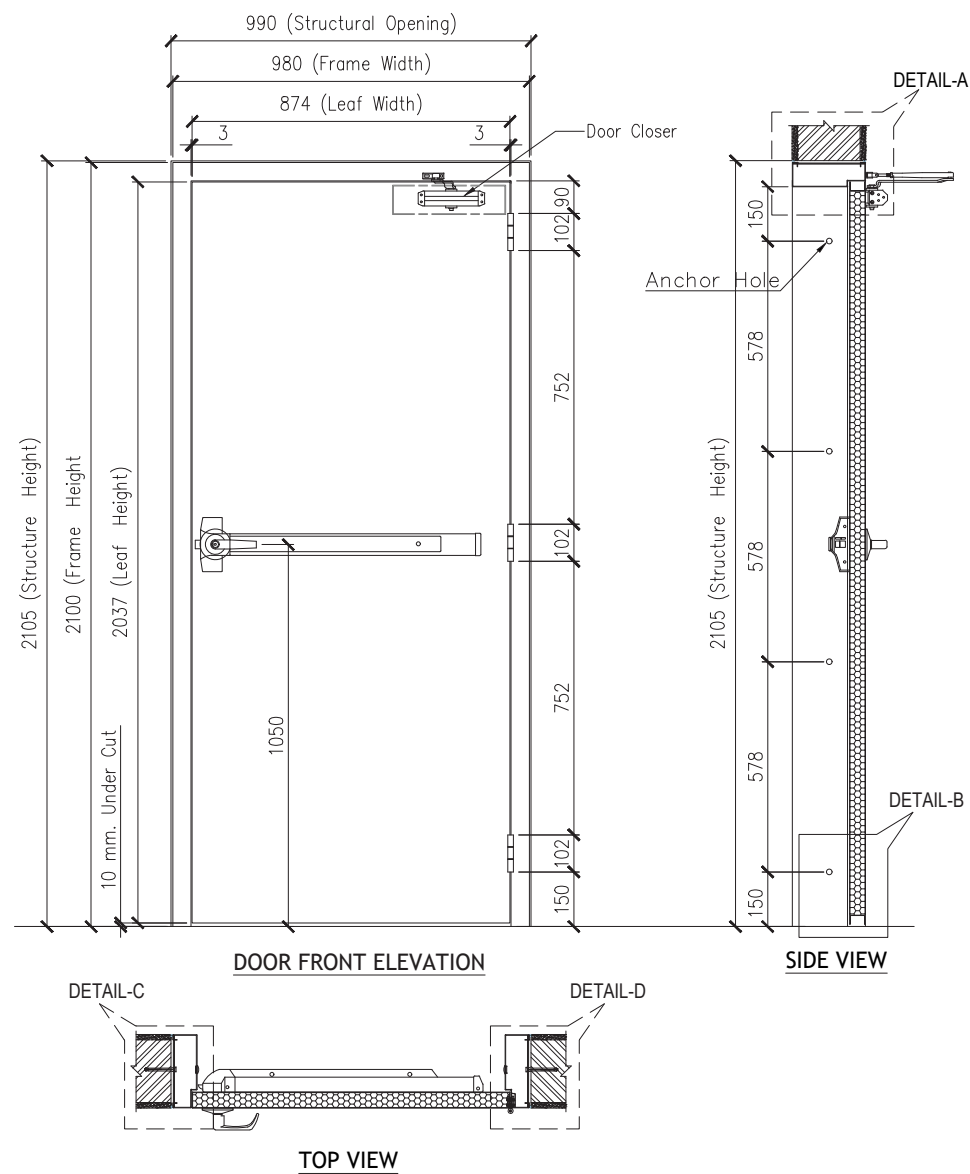
Project
REYADH, SAUDI ARABIA

Reference
BRFD-23-FD-0315-R0

BRISTOL مهندسون فينجر انجنيونج
FIRE ENGINEERING L.L.C.
P.O. BOX 74582, DUBAI, U.A.E Tel. 04-3472426, Fax. 04-3472363

TITLE
HOLLOW METAL STEEL DOOR
ELEVATION, SECTION & DETAIL

KHALID DESIGN BY	GEORGE CHECKED BY	M.DE APPROVED BY
SCALE AS-SHOWN	SHEET A3	DATE 30-03-2023
DWG. No. BRFD-PD-23-0315-02		REV. R0



R0	ISSUED FOR PRODUCTION	30/03/23	GEORGE
REV.	DESCRIPTION	DATE	CHECKED

APPROVAL STAMP & SIGNATURE

APPROVAL: UL BS
INTERTEK

LOCATION	QTY
AS PER SCHEDULE	170 Nos.

KEY SPECIFICATIONS

DOOR LEAF	1.0MM GI SHEET - 44mm THK.
FRAME	1.2MM GI SHEET
LEAF INFILL	HONEYCOMB
LEAF EDGE	LOCKFORMED
FIRE RATING	120 MIN.
FRAME PROFILE	AS-SHOWN

Contractor
AZEIDK FOR SAFETY EQUIPMENT

Project
JEDDAH, SAUDI ARABIA

Reference
BRFD-23-FD-0314-R0

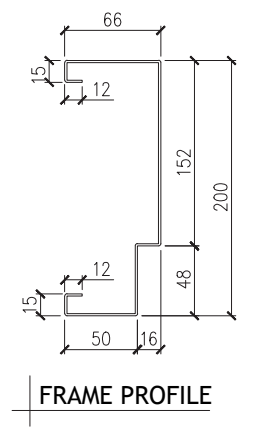
BRISTOL FIRE ENGINEERING L.L.C.
P.O. BOX 74582, DUBAI, U.A.E Tel. 04-3472426, Fax. 04-3472363

TITLE
HOLLOW METAL STEEL DOOR ELEVATION, SECTION & DETAIL

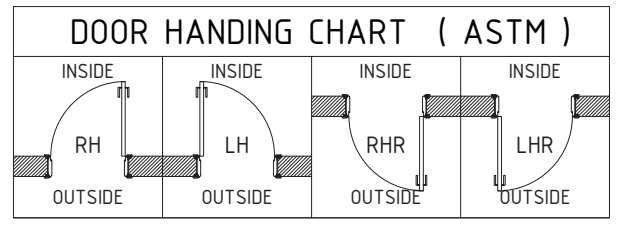
KHALID DESIGN BY	GEORGE CHECKED BY	M.DE APPROVED BY
SCALE AS-SHOWN	SHEET A3	DATE 30-03-2023
DWG. No. BRFD-PD-23-0314-01		REV. R0

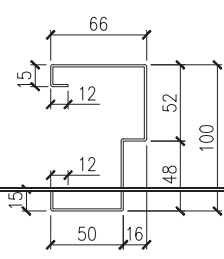
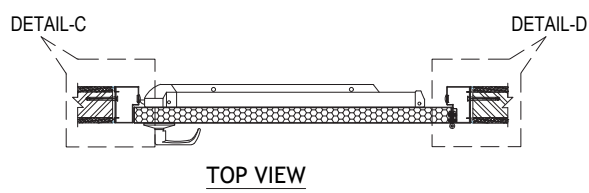
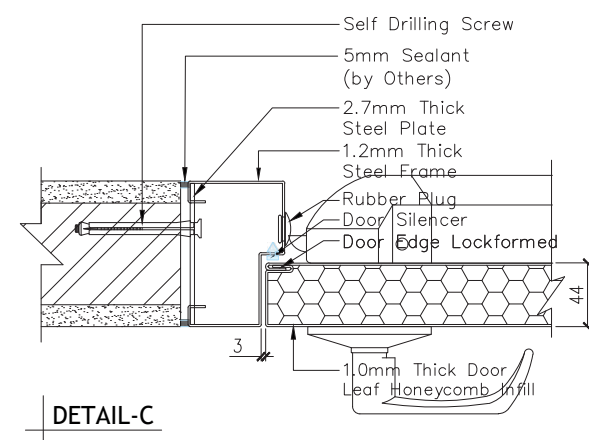
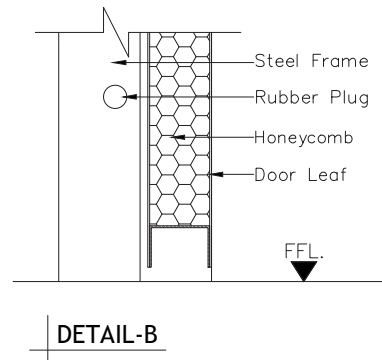
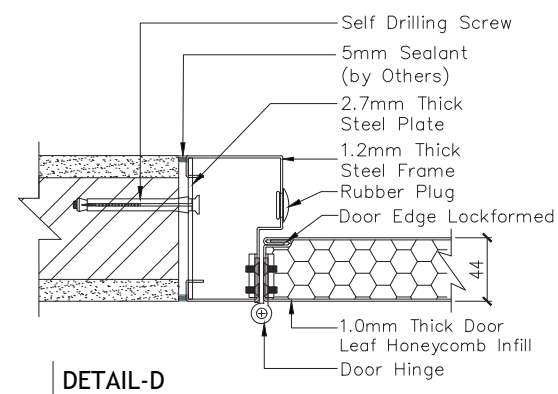
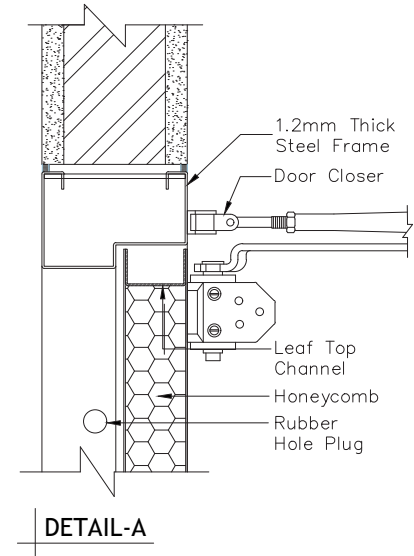
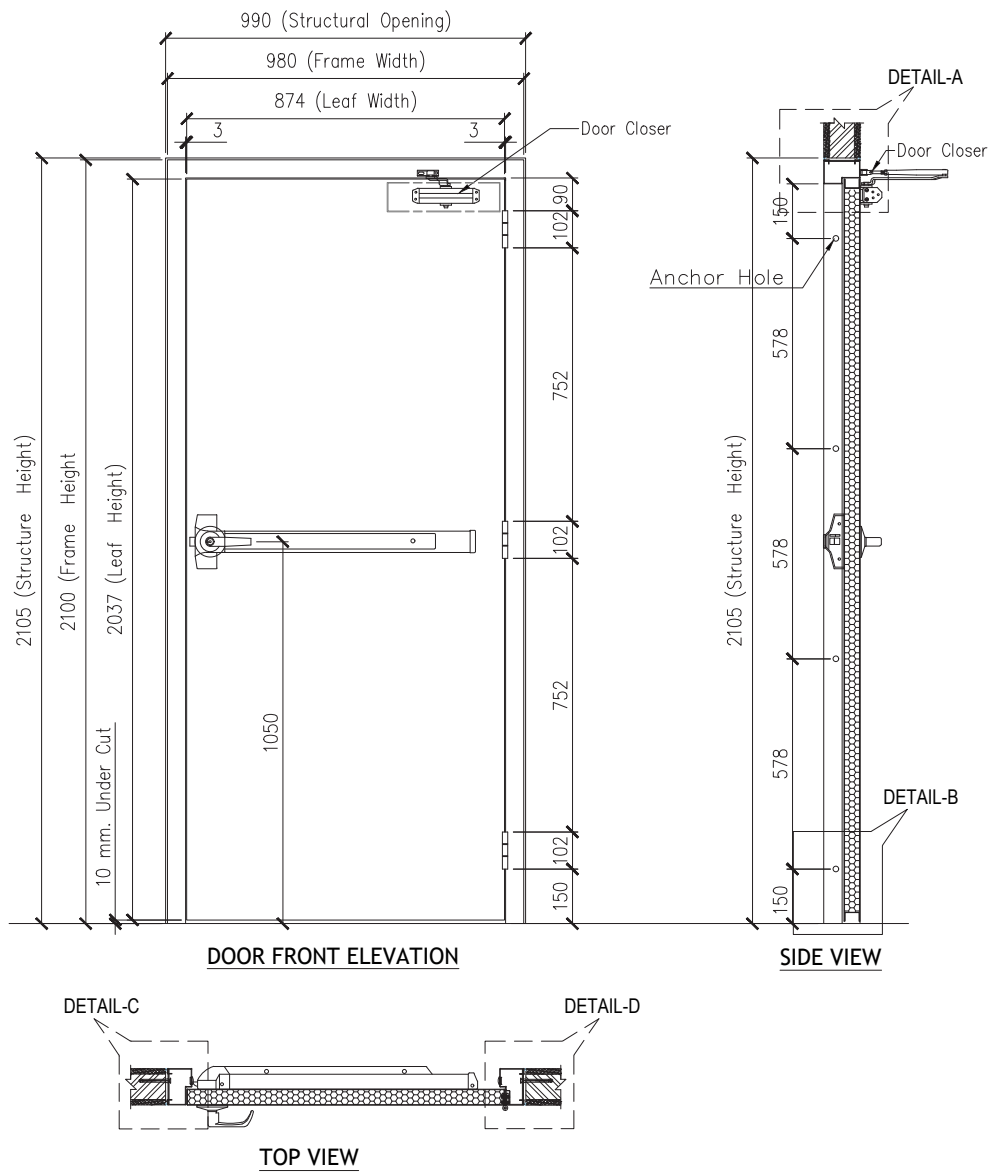
HARDWARE SET-A		(SINGLE DOOR)	DOOR QUANTITY-270 Nos.			
Sl#	Item Name	Description	Mfr	Finish	Qty	Unit
1	Ball Bearing Hinges	DDSS001 (4"x3"x3mm)	D&D	SSS	3	Each
2	Touch Bar Panic Latch	DT1500RA	Finley	SIL	1	Each
3	External Trim	017P	Oubao	SSS	1	Each
4	Door Closer	DDDC018	D&D	SIL	1	Each
5	Door Stopper	DDDS001	D&D	SSS	1	Each

TOTAL QUANTITY - 170 NOS.



RAL COLOR - 7032 TEXTURE

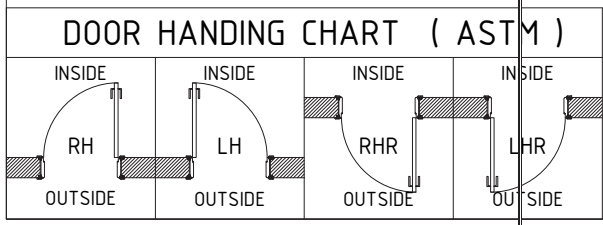




RAL COLOR - 7032 TEXTURE

HARDWARE SET-A		(SINGLE DOOR)	DOOR QUANTITY-270 Nos.			
SI#	Item Name	Description	Mfr	Finish	Qty	Unit
1	Ball Bearing Hinges	DDSS001 (4"x3"x3mm)	D&D	SSS	3	Each
2	Touch Bar Panic Latch	DT1500RA	Finley	SIL	1	Each
3	External Trim	017P	Oubao	SSS	1	Each
4	Door Closer	DDDC018	D&D	SIL	1	Each
5	Door Stopper	DDDS001	D&D	SSS	1	Each

TOTAL QUANTITY - 100 NOS.



R0	ISSUED FOR PRODUCTION	30/03/23	GEORGE
REV.	DESCRIPTION	DATE	CHECKED

APPROVAL STAMP & SIGNATURE

APPROVAL: UL BS
INTERTEK

LOCATION	QTY
AS PER SCHEDULE	100 Nos.

KEY SPECIFICATIONS	
DOOR LEAF	1.0MM GI SHEET - 44mm THK.
FRAME	1.2MM GI SHEET
LEAF INFILL	HONEYCOMB
LEAF EDGE	LOCKFORMED
FIRE RATING	120 MIN.
FRAME PROFILE	AS-SHOWN

Contractor
AZEIDK FOR SAFETY EQUIPMENT

Project
JEDDAH, SAUDI ARABIA

Reference
BRFD-23-FD-0314-R0

BRISTOL مهندسون في مجال السلامة
FIRE ENGINEERING L.L.C.
P.O. BOX 74582, DUBAI, U.A.E Tel. 04-3472426, Fax. 04-3472363

TITLE
HOLLOW METAL STEEL DOOR
ELEVATION, SECTION & DETAIL

KHALID DESIGN BY	GEORGE CHECKED BY	M.DE APPROVED BY
SCALE AS-SHOWN	SHEET A3	DATE 30-03-2023
DWG. No. BRFD-PD-23-0314-02		REV. R0



FIRE DOORS

ROCKWOOL FIRE RATED DOOR



ROCKWOOL CORE DOORS

The Rockwool Core BRISTOL uses for its fire doors has service temperature of 780°C when tested in accordance to DIN 52271. Additionally, the core is water repellent, non-hygroscopic, and non-capillary.

STEEL FIRE DOOR

Specifications:

- Type : Single and Double
- Door thickness : 44mm
- Finish : Factory polyester powder coating
- Astragal : On active leaf of double doors
- Top/Bottom Channels : Inverted U-Channel



FIRE RATINGS

According to BS 476 standards Integrity Up to 160 minutes for Double and 240 minutes for Single.

SIZES

Approval	Standard	Infill	Door	Range	Frame Height (mm)	x	Frame Width (mm)	Fire Rating (min)
Intertek	BS 476	Rockwool	Double	Max	2186	x	2058	30/60/ 90/120
				Max	2409	x	1868	
Intertek	BS 476	Rockwool	Double	Max	2095	x	1790	160
Intertek	BS 476	Rockwool	Single	Max	2176	x	1287	30/60/ 90/120
				Max	2724	x	1028	
Intertek	BS 476	Rockwool	Single	Max	2182	x	1188	180
				Max	2514	x	1031	
Intertek	BS 476	Rockwool	Single	Max	2095	x	990	240

FIRE DOORS

OPTIONAL FEATURES



VISION PANELS OPTION

The glass light frame is intended to be used in classified hollow metal type; Rockwool core and honeycomb type doors.

Fire Rated Steel Glass Light Frame should be installed above 1100 mm from the floor level

Glass light frame should be Galvanized sheet as per the approvals (BS Standard)

Glass Light Frame is welded from one side on the door and for the other side as follows

BS 476 PART 22

- a. Screw fixing (M5 X 40 mm minimum)



ADVANTAGES

1. Vision Panels are option to view, to allow people entering and exiting to see the other side of the door.
2. Reducing the potential to hit by swinging the door, Vision panels are a way of bringing borrowed light into inner spaces and creating a sense of openness. Vision panels are advanced to use to avoid space in sidelights, transoms or other glazing options.



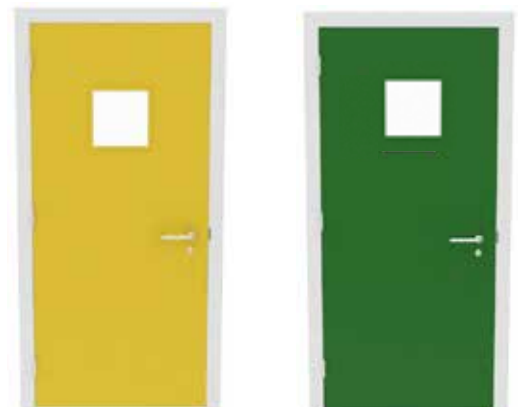
VISION PANEL SIZE FOR HONEYCOMB DOORS

Approval	Standard	Range	Glazing Height (mm)	x	Glazing Width (mm)	Fire Rating (min)
Intertek	BS 476	Max	690	x	402	120
Intertek	BS 476	Max	600	x	350	240

** Available in other design types

VISION PANEL SIZE FOR ROCKWOOL DOORS

Approval	Standard	Range	Glazing Height (mm)	x	Glazing Width (mm)	Fire Rating (min)
Intertek	BS 476	Max	575	x	402	120
Intertek	BS 476	Max	500	x	350	240



Vision Square

** Available in other design types

FIRE DOORS

OPTIONAL FEATURES



LOUVER

To be maximum 24" x 24" with fusible link only at the lower portion of the doors.

APPLICATION

Allowed to be used in fire rated honeycomb infill and rockwool infill.

Fire Rated Steel Louver should be installed below 1000 mm height from the floor level in the bottom half of the door leaf, minimum distance of the louver cut out from the door edges / as per our approval

Louver cut out – 1.5 mm thick galvanized steel C- Channel should be used around the steel louver for the reinforcement.

Louver Frame and Beading – 1.2 mm Galvanized Steel

Frame is welded to the door leaf and beading is fixed using M4 x 12 mm self- tapping screws, 3 nos. on each sides.

Louver blade – 1.2 mm thick galvanized steel blades are used.

LOUVER SIZE

Approval	Standard	Louver Height (mm)	x	Louver Width (mm)	Fire Rating (min)
Intertek	BS 476	610 (24")	x	610 (24")	240

** Applicable for Single and Double door for Honeycomb infill & rockwool infill doors.



ADVANTAGES

Louver provides free passages of air and sufficient light. It provides protection against excessive daylight and glare inside buildings without in any way affecting ventilation to create maximum air flow in and out.







IRONMONGERY

FIRE DOORS

IRONMONGERY FOR FIRE RATED DOORS



OVERHEAD DOOR CLOSER



- ◆ UL Listed
- ◆ Suitable for Left and Right Hand Application
- ◆ Suitable for Fire Door use in all Applications
- ◆ Delayed Action Version Available
- ◆ Simple Power Size Adjustment with Supplied Key
- ◆ Two separate valves adjustable closing and latching speed
- ◆ Applicable to fire rated door : UL

EXTERNAL LEVER TRIM



- ◆ Ideal for public/office doors here a more ergonomic operation is a necessary requirement.
- ◆ Grade 304 Stainless Steel, Zinc Alloy
- ◆ Suitable for all domestic, commercial and industrial use.
- ◆ Applicable to fire rated door : UL , BM TRADA, and Intertek

DOOR STOPPER

- ◆ Small shielded half moon shaped door stop with a substantial rubber buffer to protect doors.
- ◆ Floor mounted type
- ◆ Stainless Steel
- ◆ Suitable for domestic and commercial use.
- ◆ Applicable to fire rated door : UL , BM TRADA, and Intertek



PUSH BAR PANIC LATCH



- ◆ UL 10C Fire Rated for use on and metal doors
- ◆ Security Anti-Thrust latch
- ◆ Touch bar length of device : 500mm
- ◆ Available in different finishes.
- ◆ Applicable to fire rated door : UL

FIRE DOORS

IRONMONGERY FOR FIRE RATED DOORS



HINGE



- ◆ UL Listed 3 Hours fire rating
- ◆ All hinges with 5 knuckle
- ◆ Dimensions and Tolerances confirm to ANSI-A 156.7
- ◆ Ball bearing hinges have always been very popular for their smooth operation, durability, long lasting design and ability to carry heavier loads.
- ◆ Applicable to fire rated door : UL

HINGE



- ◆ The most popular type of door hinge on the market today.
- ◆ They have a CE mark and are Certifire tested.
- ◆ Suitable for industrial, commercial and domestic use.
- ◆ Ball bearing hinges have always been very popular for their smooth operation, durability, long lasting design and ability to carry heavier loads.
- ◆ Applicable to fire rated door : BM TRADA and Intertek

LEVER HANDLE



- ◆ EN1634 Fire rated Certification
- ◆ A substantial 19mm round bar return to door safety lever.
- ◆ Ideal for public/office doors here a more ergonomic operation is a necessary requirement.
- ◆ Grade 304 Stainless Steel, Zinc Alloy
- ◆ Suitable for all domestic, commercial and industrial use.
- ◆ Applicable to fire rated door : BM TRADA and Intertek

OVERHEAD DOOR CLOSER



Overhead Door Closer Variable Power Size 2-5. Delayed Action. Certified to BS EN 1125 and BS 8300 to meet the needs of disabled people. CE marked and Certifire tested. Suitable for Left and Right Hand Application

- ◆ Suitable for Fire Door use in all Applications
- ◆ Delayed Action Version Available
- ◆ Simple Power Size Adjustment with Supplied Key
- ◆ Applicable to fire rated door : BM TRADA and Intertek

FIRE DOORS

IRONMONGERY FOR FIRE RATED DOORS



PUSH BAR PANIC LATCH



The single push bar panic door kit would usually be found on a fire exit door in commercial and industrial premises. This system has a dogging function for easy use with a 'hold-open' action which enables the exit door to be used as a normal service door during the day. Bolt retracts, permitting free access.

- ◆ Certified to BS EN 1125. CE mark and Certifire tested.
- ◆ Aluminum finish.
- ◆ Applicable to fire rated door : BM TRADA, and Intertek

SASH LOCK



The Latch bolt has the Easi-T reverse function to save undoing the case so it can be reversed in seconds.

- ◆ BS EN 12209 Rated. Used as a matter of course by the national house builders.
- ◆ It has been CE and Certifire tested.
- ◆ Suitable for use in all domestic, industrial and commercial environments.
- ◆ Applicable to fire rated door : BM TRADA, and Intertek

D-TYPE PULL HANDLE



- ◆ Range in grade 304 Stainless Steel, so ideal for internal and external homes and offices.
- ◆ Available in different sizes.
- ◆ These pull handles are fixed with 2no M8 threaded bolts through the door giving the strongest fixing possible.
- ◆ Fire door rated.
- ◆ Suitable for domestic and commercial use.
- ◆ Applicable to fire rated door : Intertek and BM Trada Full glazed door

ESKUTCHEON



- ◆ provide a high degree of security, having met the standards identified by Secured by Design the UK policed flagship initiative.
- ◆ Features include; anti drill, anti pick, anti bump, fire door rated.
- ◆ Certified to British/European standards (BS EN 1303). Keyed alike or master keyed options available.
- ◆ Suitable for domestic, commercial and industrial use.
- ◆ Applicable to fire rated door : UL, BM TRADA, and Intertek

FIRE DOORS

IRONMONGERY FOR FIRE RATED DOORS



SLIM DOOR CLOSER



Concealed Slim Door Closer

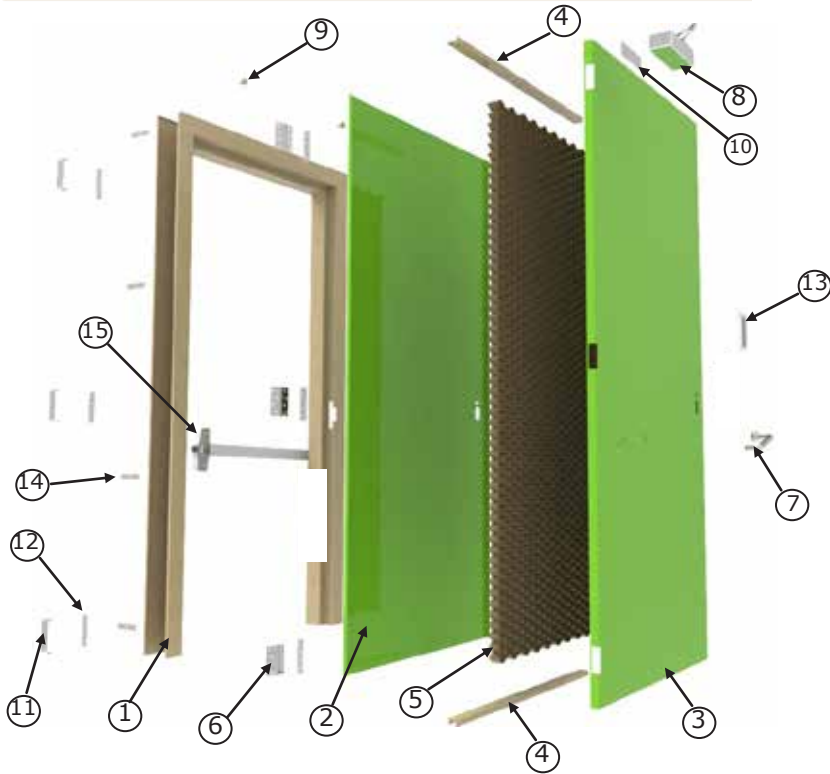
- ◆ Carries the CE mark and is Certifire accredited.
- ◆ Certified to BS EN 1154 and BS 8300 to meet the needs of disabled people
- ◆ Suitable for all domestic, commercial and industrial use.
- ◆ Suitable for Left and Right Hand Application
- ◆ Suitable for Fire Door use in all Applications
- ◆ Applicable to fire rated door : Intertek and BM Trada Full glazed door

FIRE DOORS

DOOR COMPONENTS



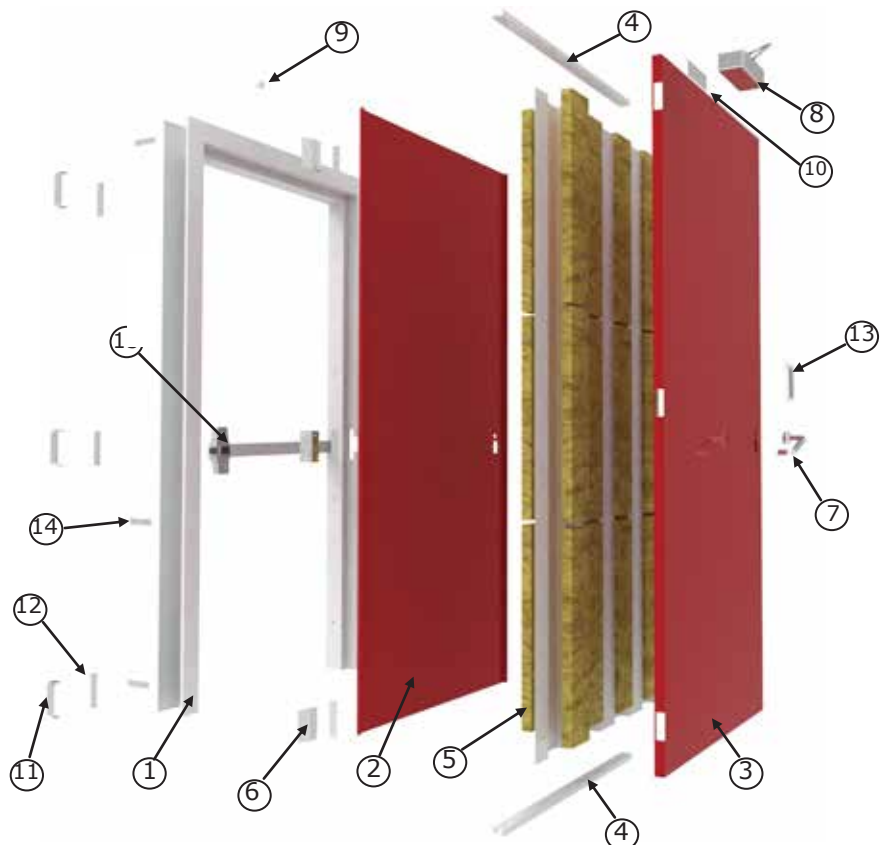
HONEYCOMB CORE DOOR



1. Door Frame
2. Door Cover
3. Door Door base
4. Inverted U channels
5. Honeycomb
6. Ball bearing Hinge
7. External Lever Trim
8. Door Closer
9. Door Silencer
10. Door Closer Reinforcement
11. Hinge Cover
12. Hinge Plate
13. Lock Cover
14. Frame jamb support
15. Push bar panic latch

ROCKWOOL CORE DOOR

1. Door Frame
2. Door Cover
3. Door Base
4. Inverted U channels
5. Rockwool
6. Ball bearing Hinge
7. External Lever Trim
8. Door Closer
9. Door Silencer
10. Door Closer Reinforcement
11. Hinge Cover
12. Hinge Plate
13. Lock Cover
14. Frame jamb support
15. Push bar panic latch



FIRE DOORS

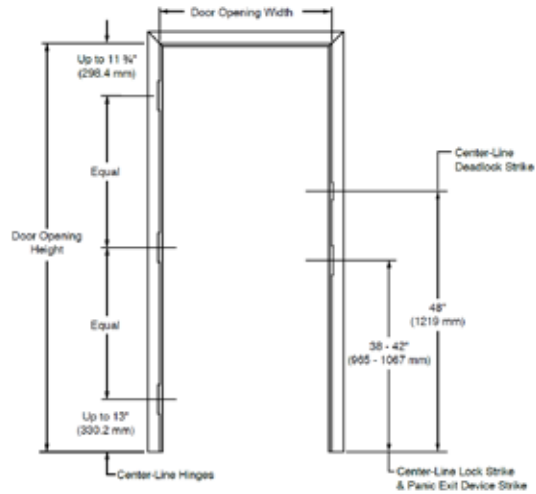
Standard Door Frame Details



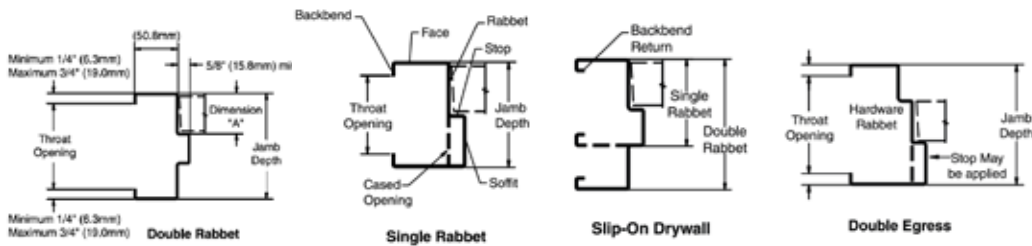
DOOR FRAME

Material: Galvanized Steel

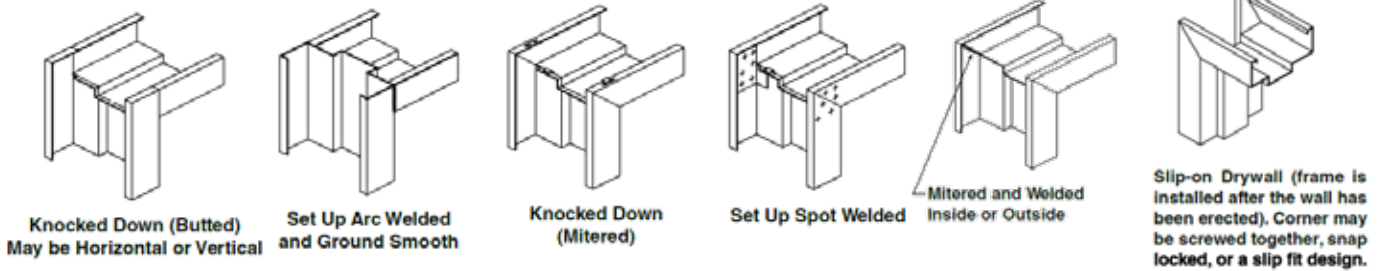
- ◆ Single and Double leaf door frames
- ◆ Available in different standard frame profiles



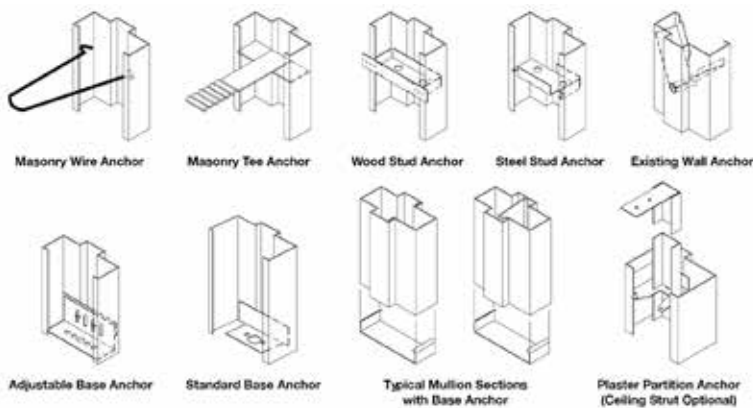
DOOR FRAME PROFILES



Door Thk.	Dim. "A"
1-3/8" (34.9mm)	1-9/16" (39.6mm)
1-3/4" (44.4mm)	1-15/16" (49.2mm)



STANDARD ANCHOR TYPES



DOOR HANDLING CHART

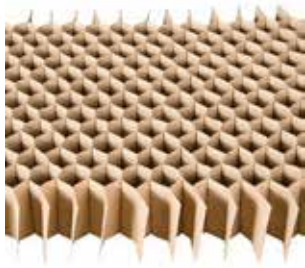
DOOR HANDLING CHART <small>(*INDICATES KEY SIDE)</small>			
SINGLE DOORS		PAIRS OF DOORS	
INSIDE RH RIGHT HAND	INSIDE LH LEFT HAND	INSIDE ACTIVE RIGHT HAND	INSIDE ACTIVE LEFT HAND
INSIDE RH RIGHT HAND REVERSE	INSIDE LH LEFT HAND REVERSE	INSIDE ACTIVE RIGHT HAND REVERSE	INSIDE ACTIVE LEFT HAND REVERSE

FIRE DOORS

Door Infill



HONEYCOMB INFILL



Paper Honey Comb Core

As door infill, the rigid honeycomb structure is integrated with the door to form hundreds of small I- beams with the door, with a uniform thickness and flat surface that makes it easy to add lites, louvers or other features. It reinforces the full width and height of the door. Honeycomb Core Doors may be used in exterior or interior applications.

Paper material : high strength corrugated/craft paper in 140g/m²

Hone Comb Core cell Size : 12 mm side size;

Width : 1250mm before expanding

Thickness : 41 mm

Honeycomb advantages are:

- 1- High strength to weight ratio.
- 2- Uniform crushing strength.
- 3- High shear strength
- 4- Excellent impact resistance.

ROCKWOOL INFILL



Rockwool, as the name implies is made by melting diabase rock mixed with coke and limestone, then converted to fibers. The raw material diabase (basalt rock) is a pure volcanic material which is millions of years old. Rockwool is classified as an inorganic material and has an excellent resistance to high temperatures and possesses superior acoustic properties.

Other important properties are as follow:

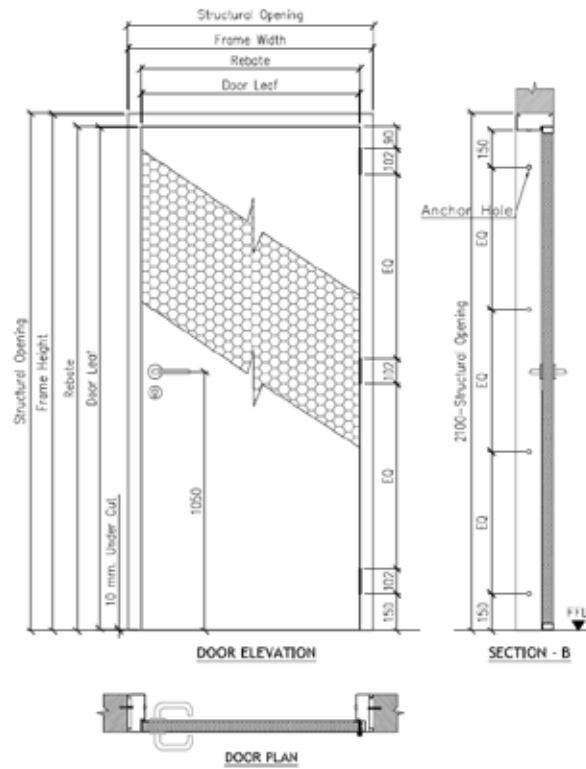
- Water Absorption tested according to BS2972: Section 12 and ASTM C-209
- Thermal Conductivity in accordance with BS 874, equivalent ASTM C-177/C 518
- Sound Absorption in accordance with BS 3638 & ISO 354, equivalent ASTM C 423
- Non-combustible in accordance with BS 476: Part 4 1970 and ASTM E-136, Class A to ASTM E-84

FIRE DOORS

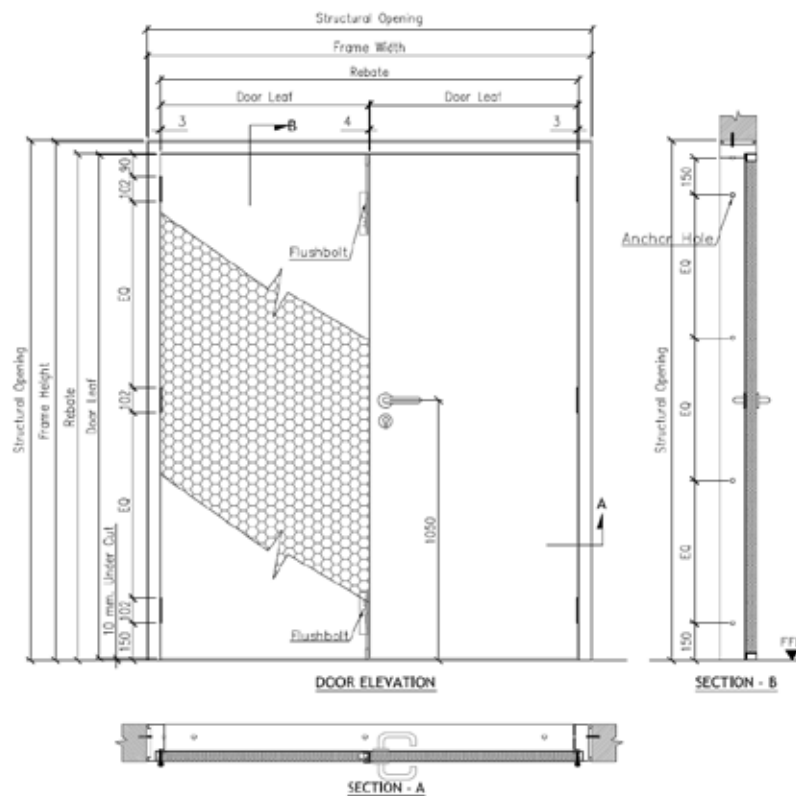
DRAWINGS



SINGLE DOOR



DOUBLE DOOR



FIRE DOORS

CERTIFICATES



Report prepared for: Mubdar De Goozen (BRISTOL Fire Engineering L.L.C.) on 4/2/2019 4:56:35 AM

Certificate of Compliance - Bristol - Honeycomb infill door assembly - E 240 - BS 476 Part 22

intertek
Test Quality Assured

Certificate of Compliance

You have been awarded:
Intertek Warnock Hersey Mark for fire resistant doors and door sets
BS 476 Part 22 (1987), BS 476 Part 22 (1987)
Certificate number: WH18-31725201

Organization:
BRISTOL Fire Engineering L.L.C.
P.O. Box 14592
Al Quoz Industrial Area 3
Dubai, United Arab Emirates

Product:
Bristol - Honeycomb infill - Single and Double Leaf Door and Frame Assembly - BS 476 Part 22
For details related to maximum dimensions and alternate configurations, see Appendix A (page 2 of 3 and 3 of 3 of this certificate)
For full details of the certified product please refer to Spec 01-00209

Certification body: Intertek Testing Services NA, Inc.
Initial registration: May 21, 2018
Date of expiry: December 31, 2021
Issue status: 1

Charles Murray
Certification Manager
10 June 2019

Report prepared for: Mubdar De Goozen (BRISTOL Fire Engineering L.L.C.) on 4/2/2019 4:56:35 AM

BRISTOL Fire Engineering L.L.C. | 44309 | Rev: Aug 1, 2019 | (E2P04) Uncontrolled Copy

Page 4 of 4

intertek
Test Quality Assured

Certificate of Compliance

You have been awarded:
WH Service Mark 2014 for Fire Door Components
BS 476 Part 22 (1987), BS 476 Part 22 (1987)
Certificate number: WH18-31725202

Organization: BRISTOL Fire Engineering L.L.C.
P.O. Box 14592
Al Quoz Industrial Area 3
Dubai
United Arab Emirates

Product: Bristol - Fusible Link Steel Louvers - BS 476 Part 22
Spec 01-0027
Fire Rating: 4 Hour Fire Rated
Linking Information: See following pages

Certification body: Intertek Testing Services NA, Inc.
Initial registration: May 21, 2018
Date of expiry: December 31, 2021
Issue status: 1

Authorized Signatory:
Jean-Philippe Kaye, Director of Certification
Intertek Testing Services NA, Inc.
561 Z. Joplin Road, Suite 400, Joplin, MO, 64801 USA
Phone: 816-439-3867 Fax: 816-439-7329

Report prepared for: Mubdar De Goozen (BRISTOL Fire Engineering L.L.C.) on 4/2/2019 4:56:35 AM

BRISTOL Fire Engineering L.L.C. | 44309 | Rev: Jan 19 2021 | 4.05PM | Uncontrolled Copy

Page 1 of 2

Report prepared for: Mubdar De Goozen (BRISTOL Fire Engineering L.L.C.) on 4/2/2019 4:55:30 AM

Certificate of Compliance - Bristol - Rockwool infill door assembly - E 120 - BS 476 Part 22

intertek
Test Quality Assured

Certificate of Compliance

You have been awarded:
Intertek Warnock Hersey Mark for fire resistant doors and door sets
BS 476 Part 22 (1987), BS 476 Part 22 (1987)
Certificate number: WH18-31725203

Organization:
BRISTOL Fire Engineering L.L.C.
P.O. Box 14592
Al Quoz Industrial Area 3
Dubai, United Arab Emirates

Product:
Bristol - Rockwool infill - Double Leaf Door and Frame Assembly - BS 476 Part 22
For details related to maximum dimensions and alternate configurations, see Appendix A (page 2 of 3 and 3 of 3 of this certificate)
For full details of the certified product please refer to Spec 01-00209

Certification body: Intertek Testing Services NA, Inc.
Initial registration: June 19, 2019
Date of expiry: December 31, 2019
Issue status: 1

Charles Murray
Certification Manager
19 June 2019

Report prepared for: Mubdar De Goozen (BRISTOL Fire Engineering L.L.C.) on 4/2/2019 4:55:30 AM

BRISTOL Fire Engineering L.L.C. | 44310 | Rev: Jul 31 2019 | 2:28PM | Uncontrolled Copy

Page 4 of 4

Report prepared for: Mubdar De Goozen (BRISTOL Fire Engineering L.L.C.) on 4/2/2019 4:54:32 AM

Certificate of Compliance - Bristol Fully Glazed Double Leaf Door & Frame Assembly - E 60 - BS 476 Part 22

intertek
Test Quality Assured

Certificate of Compliance

You have been awarded:
Intertek Warnock Hersey Mark for fire resistant doors and door sets
BS 476 Part 22 (1987), BS 476 Part 22 (1987)
Certificate number: WH18-31725204

Organization:
BRISTOL Fire Engineering L.L.C.
P.O. Box 14592
Al Quoz Industrial Area 3
Dubai, United Arab Emirates

Product:
Bristol - Fully Glazed Double Leaf Door & Frame Assembly - BS 476 Part 22
For details related to maximum dimensions and alternate configurations, see Appendix A (page 2 of 3 of this certificate)
For full details of the certified product please refer to Spec 01-00202

Certification body: Intertek Testing Services NA, Inc.
Initial registration: July 02, 2019
Date of expiry: December 31, 2019
Issue status: 1

Charles Murray
Certification Manager
22 July 2019

Report prepared for: Mubdar De Goozen (BRISTOL Fire Engineering L.L.C.) on 4/2/2019 4:54:32 AM

BRISTOL Fire Engineering L.L.C. | 44700 | Rev: Jul 31 2019 09:04AM | Uncontrolled Copy

Page 4 of 4

Over 100 Distributors Worldwide

UAE Offices

Abu Dhabi

Concorde Trading Company

Tel: +971 2 6668770 Fax: +971 2 6667863

Concorde Trading Showroom

Tel: +971 2 4433317 Fax: +971 2 4434746

Concorde Technical Company

Tel: +971 2 5575551 Fax: +971 2 5575550

Bristol Vehicles Manufacturing Division

Tel: +971 2 5575551 Fax: +971 2 5575550

Al Ain

Concorde Trading Company

Tel: +971 3 7642267 Fax: +971 3 7642268

Sharjah

Corodex Agencies

Tel: +971 6 5430800 Fax: +971 6 5430801

Dubai

Corodex Trading Company

Tel: +971 4 3472900 Fax: +971 4 3472796

Corodex Agencies (Fire Protection & Automation)

Tel: +971 4 3472530 Fax: +971 4 3472501

Bristol Fire Engineering

Tel: +971 4 3472426 Fax: +971 4 3472363

Corodex Agencies (Safety & Rescue)

Tel: +971 4 2668966 Fax: +971 4 2624617

International Offices

Oman

Integrated Engineering Solutions (IES)

Tel: +968 24700349 Fax: +968 24700631

KSA

Concorde Advance Technical Solutions

Tel: +966 12 6984993 Fax: +966 12 6984991

BRISTOL
FIRE ENGINEERING

P.o.Box 74582 Dubai, UAE

Tel: +971 4 3472426 Fax: +971 4 3472363

Email: sales@bristol-fire.com, www.bristol-fire.com

Member of



Since 1974

Concorde - Corodex Group



Intertek



NFPA



FM

APPROVED



UL

LISTED



CE



UL

LISTED



Interte*k Certificate.*

Certificate of Compliance



You have been awarded:

WH Service Mark 2014 for Category D - Door/frame Assemblies

Standards: BS 476 Part 22 (1987), EN 1634-1:2014+A1(2018)

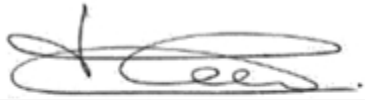
Certificate number: WHI18-31725201

This is a certificate of compliance to certify that the bearer has successfully completed the requirements of the above scheme which include the testing of products, the initial assessment, and are subject to continuing annual assessments of their compliance and testing of samples of products taken from production (as applicable to the scheme) and has been registered within the scheme for the products detailed.

Organization: BRISTOL Fire Engineering L.L.C.
P.O. Box 74582
Al Quoz Industrial Area 3
Dubai
United Arab Emirates

Product: Bristol - Honeycomb Infilled Single and Double Leaf Steel Door and Frame Assembly
Spec ID: 44289
Fire Rating: 2 Hour Fire Rated, 4 Hour Fire Rated
Listing Information: See following page(s)

Certification body: Intertek Testing Services NA, Inc.
Initial registration: May 30, 2018
Date of expiry: December 31, 2023
Issue status: 9

Authorized By: 
Jean-Philippe Kayl, Director of Certification

Intertek Testing Services NA, Inc.
545 E. Algonquin Road, Ste H., Arlington Heights, IL 60005 USA
Phone: 847-439-5667 Fax: 847-439-7320

www.intertek.com

The certificate and schedule are held in force by regular annual surveillance visits by Intertek Testing Services NA, Inc. and the reader or user should contact Intertek to validate its status. This certificate remains the property of Intertek Testing Services NA, Inc. and must be returned to them on demand. This Certificate is for the exclusive use of Intertek's Client and is provided pursuant to the Certification agreement between Intertek and its Client. Intertek's responsibility and liability are limited to the terms and conditions of the agreement. Intertek assumes no liability to any party, other than to the Client in accordance with the agreement, for any loss, expense or damage occasioned by the use of this certificate. Only the Client is authorized to permit copying or distribution of this certificate and then only in its entirety. Use of Intertek's Certification mark is restricted to the conditions laid out in the agreement. Any further use of the Intertek name for the sale or advertisement of the tested material, product or service must first be approved in writing by Intertek. Initial Factory Assessments and Follow up Services are for the purpose of assuring appropriate usage of the Certification mark in accordance with the agreement, they are not for the purposes of production quality control and do not relieve the Client of their obligations in this respect.

LISTING INFORMATION

Product Covered

Bristol - Honeycomb Infilled Single and Double Steel Leaf Door and Frame Assembly

Product Description

Honeycomb Infill - Single and Double Leaf Door and Frame Assembly

Door Frame: Minimum 1.2mm thick galvanized steel door frame with minimum 80mm jamb depth.

Door Leaf: 0.8mm to 1.2mm thick galvanized steel door leaf with honeycomb infill.

4-sides framed access door assemblies are also allowed.

Tested Sizes:

Single leaf door assembly for up to 240 minutes - BS 476 Part 22:

Frame: 990mm x 2095mm (w x h)

Leaf: 884mm x 2032mm x 44mm (w x h x thk.)

Double leaf door assembly for up to 240 minutes - BS 476 Part 22:

Frame: 1790mm x 2095mm x 150mm (w x h x jamb depth)

Leaf: 840mm x 2032mm x 44mm (w x h x thk.)

Single leaf door assembly for up to 180 minutes - EN 1634-1 and BS 476 Part 22:

Frame: 1300 x 2700mm (w x h)

Leaf: 1194 x 2637 x 45mm (w x h x thk.)

Vision panel - Ceramic Glazing - 410mm x 660mm x 5mm (w x h x thk.)

Steel Louver: 600mm x 600mm (w x h)

Limitations:

Supporting Construction: The door and frame assembly tested in standard rigid construction can be installed in a standard flexible construction like gypsum wall of the same fire rating as the door assembly.

Fire Ratings:

Single and double leaf door assemblies noted above have qualified for the following ratings according to BS 476 Part 22 standard:

Integrity	240 Minutes
-----------	-------------

Single leaf door assemblies noted above have qualified for the following ratings according to EN 1634-1:2014+A1:2018 and BS 476 Part 22 standards:

Integrity	180 Minutes
-----------	-------------

Allowed Size Extensions:

Assembly	Rating	Details	Width (mm)	Height (mm)	Area (sq.m)
Double leaf door assembly	180 Minutes	Frame	2148mm (at 2182mm height)	2514mm (at 1865mm width)	4.69 sq. m
		Leaf	1008mm (at 2117mm height)	2438mm (at 875mm width)	2.13 sq. m
	30, 60, 90 & 120 Minutes	Frame	2327mm (at 2176mm height)	2724mm (at 1859mm width)	5.06 sq. m
		Leaf	1092mm (at 2110mm height)	2642mm (at 872mm width)	2.30 sq. m

Single leaf door assembly	180 Minutes	Frame	1495mm (at 2817mm height)	3105 mm (at 1357mm width)	4.21 sq.m
		Leaf	1373mm (at 2752mm height)	3033mm (at 1246mm width)	3.78 sq.m
	30, 60, 90 & 120 Minutes	Frame	1625mm (at 2808mm height)	3375mm (at 1352mm width)	4.56 sq.m
		Leaf	1493mm (at 2742mm height)	3296mm (at 1242mm width)	4.09 sq.m

The vision panel and louver size can be increased by 15% in width and height, limited by 20% increase in area for 30, 60, 90, 120 & 180 Minutes rating.

Test report reference: SD007-1 and WB137-3to6.

عن الدفاع المدني الإنذار الآلي المبكر التوعية الوقائية الكوارث الطبيعية خدمات منسوبي رأيك اتصل بنا خدمات منسوبي رأيك خدمات منسوبي رأيك خدمات منسوبي رأيك



المختبرات المعتمدة لدى شئون السلامة

Testing Laboratories Approved by Saudi Civil Defense

Lab. Name	Logo	Address	Phone& Fax
Factory Mutual	FM	FM Global Corporate Headquarters 7500Po Box ,R.I. 02919 USAJohnston	http://www.fmglobal.com information@fmglobai.com
Factory Mutual	UL	Corporate Headquarters 333 pinkster Road ,IL60062-2096Northbrook U.S.A	Telephone: 847-272-8800 Fax: 847-272-8129 http://www.ul.com northbrook@ul.com
LGAI Technologic al Center S.A (APPLUS)	Applus	Campus UAB, Ronda de la Font fel Carme. s/n 08193 Bellaterr a- Barcelona	appluslaboratories.com/ http://www./global/en Abhishek kandoi M:+971 56 414 9390 E:abhishek.kanodi@applus.com

			Joan Piera Creixell M:+34 667 186 957 E:joan.piera@applus.com
The Loss Prevention Certification Board, BRE Certification Ltd	LPCB	Loss Prevention Council Board, BRE Certification Ltd , Garston, Watford, Herefordshire WD 25 9XX United Kingdom	LGAI T Tel: +44(0)1923664100 +44(0)1923664994 Fax: www.brecertification.co.uk Email : inquiries @ brecertification .co.uk
British Standards Institution	BSI	Cheswick High Road W4 4ALLondon United Kingdom	Tel: +44(0)2089967070 Fax: +44(0)2089966400 http://www.bsi.org.uk Email: info @bsi.org.uk
VdS Loss Prevention	VDS	VDS schadenverhutung Amsterdamer Str.174 D- 50735 Köln	Tel: +49(0)22177660 Fax: +49(0)2217766341 fireprotection_labs@vds.de http://www.vds.de
Underwriters Laboratories of Canada	ULC	7Crouse Road , OntarioToronto MIR3A9	Tel:(416)757-3611 Fax(416)757-9540 http://www.ulc.ca
Institute for Technical Fire Protection & Safety Research	IBS	Austria	Tel: +43(0)7327617-850 Tel: +43(0)7327617-89 http://www.ibs-austria.at
ProductivitySingapore And Standard Board	PSB	2 Bukit Merah BuildingPSB 159835Central Singapore	Tel:2786666 Fax:2786667 http://www.psb.com
TastingKorea Laboratories	KTL	Korea	Tel:02-9601114 Fax:029601285

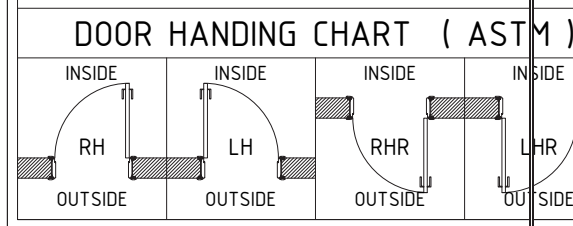
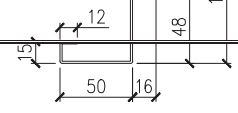
			http://www.ktl.re.kr
Intertek Tasting Services "Warnock Heresy"	ITS	Antioch industrial Park,2000 Wymore way,Antioch,CA94509	Tel:925-756-6606 Fax:925-756-6094 http://www.etlsemko.com
Warrington Fire Research Center Ltd	WFRC	Holmes field Road, Warrington, UI WAI 2DS	Tel:44(0)1925655116 Fax:44(0)1925646616 wfrc.co.ukhttp://www.wfrc.co.uk
Thomas Bell-Wright International Consultants	TBWIC	Jebel Ali Industrial Area 1, Dubai, UAE :Post Office Address PO BOX 26385, Dubai, UAE	Ph +971 (0)4 8215777 Email : fire@bell-wright.com
Advanced Contruction Technology Services(ACTS)	ACTS	Aldamam	Ph +966541105599 MR.Gazi AL ghamdi Email : galghamdi@acts-int.com

1	Each
1	Each

BRISTOL **بوستول فاير انجنيورينج**
 FIRE ENGINEERING L.L.C.
 P.O. BOX 74582, DUBAI, U.A.E Tel. 04-3472426, Fax. 04-3472363

TITLE
**HOLLOW METAL STEEL DOOR
 ELEVATION, SECTION & DETAIL**

KHALID DESIGN BY	GEORGE CHECKED BY	M.DE APPROVED BY
SCALE AS-SHOWN	SHEET A3	DATE 30-03-2023
DWG. No. BRFD-PD-23-0314-01		REV. R0



ISO Certificate.

BUREAU VERITAS
Certification



BRISTOL ENGINEERING

**P.O. BOX 12282, 8th STREET,
AL QUOZ INDUSTRIAL AREA NO. 3, DUBAI,
UNITED ARAB EMIRATES**

Bureau Veritas Certification Holding SAS – UK Branch certifies that the Management System of the above organisation has been audited and found to be in accordance with the requirements of the management system standards detailed below

ISO 9001:2015

Scope of Certification

SUPPLY, FILLING, REPAIRING AND SERVICING OF FIRE EXTINGUISHERS. SUPPLY AND INSTALLATION OF FIRE RATED DOORS. SUPPLY, REPAIRING AND SERVICING OF FIRE CABINET WITH SUPPLY OF FIRE HOSE & HOSE REEL. SUPPLY AND ASSEMBLY OF FIRE / WATER PUMP WITH SUPPLY OF ASSOCIATED VALVES. SUPPLY AND FILLINGS OF GAS CYLINDERS FOR FM200 GAS, NOVEC 1230, NITROGEN GAS, CO2, ARGON, INERT GASES AND INDUSTRIAL GASES. SUPPLY OF BREATHING APPARATUS, SPRINKLE SYSTEM, SECURITY SYSTEM. SUPPLY OF AMBULANCE AND REFURBISHMENT OF FIRE TRUCKS.

Original cycle start date: **27th JANUARY 2007**

Expiry date of previous cycle: **15th AUGUST 2021**

Recertification Audit date: **15th JULY 2021**

Recertification cycle start date: **12th AUGUST 2021**

Subject to the continued satisfactory operation of the organization's Management System, this certificate expires on: **15th AUGUST 2024**

Certificate No. **DU004437-003**

Version No. **1**, Issue date: **12/08/2021**

Signed on behalf of BVCH SAS UK Branch



0008

Certification body address: 5th Floor, 66 Prescott Street, London E1 8HG, United Kingdom
Local office: Bureau Veritas – Dubai Br., 2nd Floor, Block C, Al Hudaiba Awards Building,
Jumeirah Road with 2nd December Interchange, Dubai, U.A.E.

Further clarifications regarding the scope and validity of this certificate, and the applicability of the management system requirements, please call: 00971 4 3074400
The validity of this certificate depends on the validity of the main certificate.

BUREAU VERITAS
Certification



BRISTOL ENGINEERING

P.O. BOX 12282, 8th STREET,
AL QUOZ INDUSTRIAL AREA NO. 3, DUBAI,
UNITED ARAB EMIRATES

Bureau Veritas Certification Holding SAS – UK Branch certifies that the Management System of the above organisation has been audited and found to be in accordance with the requirements of the management system standards detailed below

ISO 14001:2015

Scope of Certification

SUPPLY, FILLING, REPAIRING AND SERVICING OF FIRE EXTINGUISHERS. SUPPLY AND INSTALLATION OF FIRE RATED DOORS. SUPPLY, REPAIRING AND SERVICING OF FIRE CABINET WITH SUPPLY OF FIRE HOSE & HOSE REEL. SUPPLY AND ASSEMBLY OF FIRE / WATER PUMP WITH SUPPLY OF ASSOCIATED VALVES. SUPPLY AND FILLINGS OF GAS CYLINDERS FOR FM200 GAS, NOVEC 1230, NITROGEN GAS, CO₂, ARGON, INERT GASES AND INDUSTRIAL GASES. SUPPLY OF BREATHING APPARATUS, SPRINKLE SYSTEM, SECURITY SYSTEM. SUPPLY OF AMBULANCE AND REFURBISHMENT OF FIRE TRUCKS.

Original cycle start date: **16th AUGUST 2012**

Expiry date of previous cycle: **15th AUGUST 2021**

Recertification Audit date: **15th JULY 2021**

Recertification cycle start date: **12th AUGUST 2021**

Subject to the continued satisfactory operation of the organization's Management System, this certificate expires on: **15th AUGUST 2024**

Certificate No. **DU004438-003**

Version No. **1**, Issue date: **12/08/2021**

Signed on behalf of BVCH SAS UK Branch



0008

Certification body address: 5th Floor, 66 Prescott Street, London E1 8HG, United Kingdom
Local office: Bureau Veritas – Dubai Br., 2nd Floor, Block C, Al Hudaiba Awards Building,
Jumeirah Road with 2nd December Interchange, Dubai, U.A.E.

Further clarifications regarding the scope and validity of this certificate, and the applicability of the management system requirements, please call: 00971 4 3074400
The validity of this certificate depends on the validity of the main certificate.



BUREAU VERITAS
Certification



BRISTOL ENGINEERING

**P.O. BOX 12282, 8th STREET,
AL QUOZ INDUSTRIAL AREA NO. 3, DUBAI,
UNITED ARAB EMIRATES**

Bureau Veritas Certification Holding SAS – UK Branch certifies that the Management System of the above organisation has been audited and found to be in accordance with the requirements of the management system standards detailed below

ISO 45001:2018

Scope of Certification

SUPPLY, FILLING, REPAIRING AND SERVICING OF FIRE EXTINGUISHERS. SUPPLY AND INSTALLATION OF FIRE RATED DOORS. SUPPLY, REPAIRING AND SERVICING OF FIRE CABINET WITH SUPPLY OF FIRE HOSE & HOSE REEL. SUPPLY AND ASSEMBLY OF FIRE / WATER PUMP WITH SUPPLY OF ASSOCIATED VALVES. SUPPLY AND FILLINGS OF GAS CYLINDERS FOR FM200 GAS, NOVEC 1230, NITROGEN GAS, CO2, ARGON, INERT GASES AND INDUSTRIAL GASES. SUPPLY OF BREATHING APPARATUS, SPRINKLE SYSTEM, SECURITY SYSTEM. SUPPLY OF AMBULANCE AND REFURBISHMENT OF FIRE TRUCKS.

Original cycle start date: **12th AUGUST 2021**

Expiry date of previous cycle: **NA**

Certification Audit date: **15th JULY 2021**

Certification cycle start date: **12th AUGUST 2021**

Subject to the continued satisfactory operation of the organization's Management System, this certificate expires on: **15th AUGUST 2024**

Certificate No. **DU004439-003**

Version No. **1**, Issue date: **12/08/2021**

Signed on behalf of BVCH SAS UK Branch



0008

Certification body address: 5th Floor, 66 Prescott Street, London E1 8HG, United Kingdom
Local office: Bureau Veritas – Dubai Br., 2nd Floor, Block C, Al Hudaiba Awards Building,
Jumeirah Road with 2nd December Interchange, Dubai, U.A.E.

Further clarifications regarding the scope and validity of this certificate, and the applicability of the management system requirements, please call: 00971 4 3074400
The validity of this certificate depends on the validity of the main certificate.

Mill Test Certificate.

Order No.: JS23333155

PO No.: SC-GI/020

Commodity: GALVANIZED COIL

Customer: DAYAL BUILDING MATERIALS

Spec & Type: ASTM A653M CS TYPE A

Size	Product No.	Quantity	Weight (kg)	Heat No.	Position	Tensile Test			Hardness	Coating Metal Bend Test	Coating Weight		Division	Chemical Composition																		
						YP (MPa)	TS (MPa)	EL (%)			Zn (g/m ²)	Zn (g/m ²)		C (%)	SI (%)	Mn (%)	P (%)	S (%)	Cr (%)	NI (%)	Cu (%)	Mo (%)	Nb (%)	TI (%)								
1.00x1220xC	13DB05988A	1	12,110	21204765_21	B	289	365	39	55.8	Good	63.3	60.7	L	0.0261	0.006	0.202	0.0137	0.0074	0.010	0.000	0.007	0.000	0.000	0.000	0.000	0.000	0.000	0.000	0.000	0.000		
1.00x1220xC	13DB05988B	1	12,100	21204765_21	B	289	365	39	55.8	Good	63.3	60.7	L	0.0261	0.006	0.202	0.0137	0.0074	0.010	0.000	0.007	0.000	0.000	0.000	0.000	0.000	0.000	0.000	0.000	0.000	0.000	
1.00x1220xC	13DB05989A	1	12,070	21204765_21	B	292	364	38	56.8	Good	61.3	62.0	L	0.0261	0.006	0.202	0.0137	0.0074	0.010	0.000	0.007	0.000	0.000	0.000	0.000	0.000	0.000	0.000	0.000	0.000	0.000	
1.00x1220xC	13DB05989A	1	9,180	21204765_21	B	292	364	38	56.8	Good	61.3	62.0	L	0.0261	0.006	0.202	0.0137	0.0074	0.010	0.000	0.007	0.000	0.000	0.000	0.000	0.000	0.000	0.000	0.000	0.000	0.000	
1.00x1220xC	13DB05989A	1	11,920	21204765_21	B	285	363	40	56.2	Good	61.0	61.7	L	0.0261	0.006	0.202	0.0137	0.0074	0.010	0.000	0.007	0.000	0.000	0.000	0.000	0.000	0.000	0.000	0.000	0.000	0.000	
1.00x1220xC	13DB05989B	1	11,380	21204765_21	B	285	363	40	56.2	Good	61.0	61.7	L	0.0261	0.006	0.202	0.0137	0.0074	0.010	0.000	0.007	0.000	0.000	0.000	0.000	0.000	0.000	0.000	0.000	0.000	0.000	
1.00x1220xC	13DB05989A	1	12,110	21204765_21	B	295	370	39	56.9	Good	62.3	61.0	L	0.0261	0.006	0.202	0.0137	0.0074	0.010	0.000	0.007	0.000	0.000	0.000	0.000	0.000	0.000	0.000	0.000	0.000	0.000	0.000
1.00x1220xC	13DB05989A	1	11,580	21204765_21	B	295	370	39	56.9	Good	62.3	61.0	L	0.0261	0.006	0.202	0.0137	0.0074	0.010	0.000	0.007	0.000	0.000	0.000	0.000	0.000	0.000	0.000	0.000	0.000	0.000	0.000
1.00x1220xC	13DB05989A	1	12,070	21204765_21	B	283	370	39	62.6	Good	61.3	60.7	L	0.0261	0.006	0.202	0.0137	0.0074	0.010	0.000	0.007	0.000	0.000	0.000	0.000	0.000	0.000	0.000	0.000	0.000	0.000	0.000
1.00x1220xC	13DB05989B	1	11,840	21204765_21	B	283	370	39	62.6	Good	61.3	60.7	L	0.0261	0.006	0.202	0.0137	0.0074	0.010	0.000	0.007	0.000	0.000	0.000	0.000	0.000	0.000	0.000	0.000	0.000	0.000	0.000
*** Sub Total (020) ***		10	116,360 (kg)																													
1.20x1220xC	13DB05985A	1	8,660	21204765_21	B	269	358	39	54.5	Good	61.7	60.7	L	0.0261	0.006	0.202	0.0137	0.0074	0.010	0.000	0.007	0.000	0.000	0.000	0.000	0.000	0.000	0.000	0.000	0.000	0.000	
1.20x1220xC	13DB05985B	1	8,660	21204765_21	B	269	358	39	54.5	Good	61.7	60.7	L	0.0261	0.006	0.202	0.0137	0.0074	0.010	0.000	0.007	0.000	0.000	0.000	0.000	0.000	0.000	0.000	0.000	0.000	0.000	0.000
1.20x1220xC	13DB05985C	1	6,540	21204765_21	B	269	358	39	54.5	Good	61.7	60.7	L	0.0261	0.006	0.202	0.0137	0.0074	0.010	0.000	0.007	0.000	0.000	0.000	0.000	0.000	0.000	0.000	0.000	0.000	0.000	0.000
1.20x1220xC	13DB05978B	1	9,760	21204812_21	B	297	370	39	58.1	Good	62.3	62.3	L	0.0375	0.008	0.203	0.0001	0.0050	0.010	0.000	0.007	0.000	0.000	0.000	0.000	0.000	0.000	0.000	0.000	0.000	0.000	0.000
1.20x1220xC	13DB14708	1	12,980	21404716_21	B	286	369	39	51.4	Good	61.7	61.7	L	0.0358	0.010	0.206	0.0150	0.0062	0.010	0.000	0.009	0.000	0.000	0.000	0.000	0.000	0.000	0.000	0.000	0.000	0.000	0.000
1.20x1220xC	13DB05984A	1	11,920	21404727_21	B	283	366	40	57.4	Good	61.7	63.0	L	0.0482	0.005	0.191	0.0096	0.0100	0.010	0.010	0.010	0.009	0.000	0.000	0.000	0.000	0.000	0.000	0.000	0.000	0.000	0.000
1.20x1220xC	13DB05984B	1	11,500	21404727_21	B	283	366	40	57.4	Good	61.7	63.0	L	0.0482	0.005	0.191	0.0096	0.0100	0.010	0.010	0.010	0.009	0.000	0.000	0.000	0.000	0.000	0.000	0.000	0.000	0.000	0.000
*** Sub Total (020) ***		7	69,330 (kg)																													

Position - T: Top, M: Middle, B: Bottom

* Tensile Test Direction: Longitudinal, Gauge Length: 50 mm (Rectangular)

YP Method: Upper Point

Coating grade: 120

Division - L: Ladle Analysis

* SHIPPING MARKS: DBMT-J/8290/97488038300

* DOCUMENTARY CREDIT NUMBER: ACIC2104147 DATE OF ISSUE 211212

* ISSUED BY MILL "POSCO MAHARASHTRA STEEL PVT. LTD" PLOT NO. C-1, VILLE BHAGAD MIDC, INDUSTRIAL AREA, TAL- MANGAON, DIST- RAIGAD-402 308, MAHARASHTRA, INDIA, TEL: +91-214066-1026/1099, FAX: +91-214066-1098

Surveyor To:

Yong Hae Baek

Plot No. C-1, Ville/Bhagad, MIDC Industrial Area, Tal:Mangaon, Dist:Raigad-402 308, Maharashtra, India

< PAGE : 1 >

Chair of material testing section

Yong Hae Baek

Legal sanction can be imposed on forging, improper use of product can cause safety issues.



Order No.: IGS2336008

PO No.: SC-GI/020

Commodity : GALVANIZED COIL

Customer : DAYAL BUILDING MATERIALS

Spec & Type : ASTM A653M CS TYPE A

Size	Product No.	Quantity	Weight (kg)	Heat No.	Position	Y.P. (N)	T.S. (N)	EL (%)	Hardness (HRB)	Coating Metal Bend Test	Coating Weight (g/m ²)	D.S. (%)	Chemical Composition (%)	C (%)	Mn (%)	P (%)	S (%)	Cr (%)	Ni (%)	Cu (%)	Mo (%)	Nb (%)	Ti (%)
100x1220xC	130B5304AA	1	7,820	21404727_21	B	272	364	38	57.3	Good	61.0	62.7	0.0482	0.005	0.191	0.0096	0.0100	0.010	0.010	0.009	0.000	0.004	0.0010
100x1220xC	130B5304BB	1	7,870	21404727_21	B	272	364	38	57.3	Good	61.0	62.7	0.0482	0.005	0.191	0.0096	0.0100	0.010	0.010	0.009	0.000	0.004	0.0010
	Sub Total (010) ***	2	15,690 (kg)			< Not Welded >																	
120x1220xC	130B7526A	1	11,790	21104736_21	B	276	360	40	55.3	Good	61.7	61.7	0.0418	0.007	0.204	0.0089	0.0052	0.010	0.000	0.012	0.000	0.004	0.0010
120x1220xC	130B7526B	1	9,550	21104736_21	B	276	360	40	55.3	Good	61.7	61.7	0.0418	0.007	0.204	0.0089	0.0052	0.010	0.000	0.012	0.000	0.004	0.0010
120x1220xC	130B9867A	1	11,520	22100053_22	B	293	389	38	57.2	Good	63.3	64.3	0.0399	0.011	0.198	0.0078	0.0030	0.000	0.000	0.005	0.000	0.004	0.0010
	Sub Total (020) ***	3	33,260 (kg)			< Not Welded >																	
	Grade Total ***	5	48,950 (kg)																				
	Grand Total ***	5	48,950 (kg)																				



• Position - T: Top, M: Middle, B: Bottom
 • Tensile Test Direction : Longitudinal, Gauge Length : 50 mm (Rectangular),
 Y.P Method : Upper Point
 • Coating grade : 120
 • Division : L: Ladle Analysis
 • SHIPPING MARKS: DBMT-7/8290/ 97148038300
 • DOCUMENTARY CREDIT NUMBER: ACIL2104147, DATE OF ISSUE 211212
 • ISSUED BY: MILL "POSCO MAHARASHTRA STEEL PVT LTD
 PLOT NO C-1, VILLE-BAGAD MIDC, INDUSTRIAL AREA,
 TAL. MANGAON, DIST-RAIGAD-402 308, MAHARASHTRA, INDIA
 TEL. +91-214066-1026/1089 FAX: +91-214066-1008"

We hereby certify that the material herein has been made in accordance with the order and is fully in compliance with the requirements of the order.



Surveyor To
 Yong Has Back

Shipment Conformity
Certificate.



شهادة مطابقة إرسالية للمنتجات المستوردة Shipment Conformity certificate for imported products



نحن جهة تقويم المطابقة (.....) SGS Gulf Limited (UAE) رقم المكتب (.....) 03932 نتعهد بأن جميع بيانات الفئحات الموجودة في طلب الإرسالية مطابق تماما لما ورد في شهادة مطابقة المنتج الممنوحة للمنتج سابقا، ونتعهد بتوفير أي ملفات فنية للمنتجات تطبقها الهيئة السعودية للمواصفات والمقاييس والجودة أو من يمثلها لاحقا، وفي حال تبين عدم صحة ذلك التحمل جميع التبعات النظامية المترتبة على ذلك

Certificate Number	AE-23-0824596	Issue Date	12/04/2023	Expiration Date	11/06/2023
Certificate Type	Shipment Conformity Certificate for Imported Products	Commercial Registration No	4030267410		
Establishment Address	5065 2 8073-22335 جدة	Shipment country	United Arab Emirates		
Product Certificate No.	19117-039-23-926970				

Product and Manufacturer Data

Model Name	BS476-22	Trade Mark	BRISTOL
Product Name	Fire Door.		
Product Description	Single/double leaf door with honeycomb/Rockwool infill (GI powder coated)		
Country of origin	United Arab Emirates		
Production Date			
HS Code	73083000001		
Technical Regulation	Technical Regulation for Doors, Windows, and Accessories		
Manufacturer name	BRISTOL FIRE ENGINEERING LLC		
Exporter name	Bristol fire engineering LLC	Exporter Address	UAE

CB Organization Office Responsible manager signature

12/04/2023 12:14

CB Organization Office Stamp



Certificate Number	AE-23-0824596	HS Code	730830000001
Product Name	Fire Door.	Model Name	BS476-22
Total quantities	270		
Model Number	License Number	Quantity	License Status
BS476-22	Does not hold a license	270	Active



Certificate Number	AE-23-0824596	HS Code	730830000001
Product Name	Fire Door.	Model Name	BS476-22
Quantity	270	Unit	UNIT

Product invoices supplement

Invoice number	Invoice Date	The amount of the item on the invoice	Invoices Currency
109BF23	11/04/2023	202,500	Emirati Dirham





شركة أزيدك
لأجهزة السلامة

Infill Material (Paper - Honeycomb).

الإدارة: جدة - حي الصفا - شارع الأمير ماجد - الصفا بلازا - مبنى A الدور الثالث مكتب 340 - س.ت: 403026741 - هاتف -6342166- 0126880407 -

فاكس تحويلة: 111-: 0581444606

المعرض | : جدة - شارع البلديّة - مركز الفانوس | المعرض 2: مكة - شارع الحج

الفروع: الرياض - ينبع - المدينة - الطائف - خميس مشيط - الدمام

info@azeidk.com www.Azeidk.com

CoreGere Honeycomb



Data Sheet

Product Specification		Material Specification	
Cell Size:	17-60 mm	Paper supplier:	SAPPI- South Africa Pty Ltd
Paper weight:	160gsm- 250gsm	Mill:	Tugela Mill
Product weight:	various	Material:	Unbleached pulp and kraft
Paper quality:	Brown Industrial Kraft		
Width before expanded:	1800mm - 1200mm		
Expanded length:	1000mm- 3000mm		
Expanded width:	500mm-1000mm		
Glue quality:	PVAc		
Paper supplier:	SAPPI		
Production date:	Various		
Name customer:			
Moisture Level:	8% - 12%		
Production order no.	Application: Steel Door, wood door, furniture, dry walling		
Height of cut:	any size	Grooved:	No/Yes
		Hot pressing:	Yes
		Cold pressing:	Yes
Wet weight per m ² :	447,65 gram	Dry weight per m ² :	424,6 gram
No.	Collapsion pressure	Remark	<p>Correction factor referring to diameter pressure plate (surface) 107.0= 1:2</p> <p>Pressure strength Pressure strength = Av. Collapsion pressure: Correction factor- cm² 5,96 : 2 = 2,98 Kg/cm²</p> <p style="text-align: center;">APPROVED</p> <p>Moisture content (Ideal 5%) Moisture content = $\frac{\text{Wet weight} - \text{Dry weight}}{\text{Wet weight}} \times 100\%$ (580,3 - 551,2) : 580,3 x 100% = 5%</p> <p style="text-align: center;">APPROVED</p>
1	6,0	Pass	
2	6,1	Pass	
3	5,7	Pass	
4	5,8	Pass	
5	6,1	Pass	
6	6,1	Pass	
7	6,0	Pass	
8	5,8	Pass	
Average 47,6:8=5,96			

Customer Application

Pressing: Heavy duty door pressing

Type of door: Steel Door

Powder Coating.

Jotun Facade 1301, 1303, 1307, 1308

PRODUCT DESCRIPTION

This lead-free TGIC powder coating is specifically designed to meet stringent requirements of the construction industry. It provides longevity to the projects and building components by ensuring gloss retention, colour stability and corrosion protection. This powder enables efficient application and provides uniform flow and attractive finish even after recycling.

Jotun Facade 1301, 1303, 1307, 1308 are formerly know as Corro-Coat PE-F 1301, 1303, 1307, 1308.

Application areas

Primary areas of application are architectural aluminium extrusions and claddings. The overall excellent properties and attractive appearance of this product make it suitable for application to other ferrous and non-ferrous substrates.

When screen printing or sealants are used, it is advised to run separate trials to ensure compatibility and to meet the required performance criteria.

POWDER PROPERTIES

Storage

Keep in a dry cool area. Maximum temperature 25 °C. Maximum relative humidity 60 %. Under these mentioned conditions, product shelf life is 12 months from date of manufacture.

APPLICATION

Pretreatment

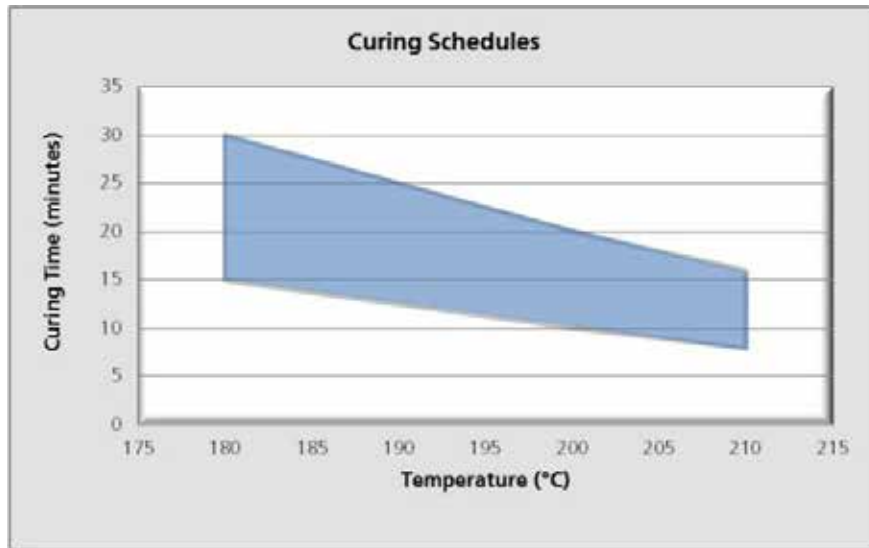
The overall performance of the coating system is largely dependent on the nature of the substrate and the type and quality of the pretreatment. For optimal results, it is recommended to follow the pretreatment supplier's instructions and recommendations.

The recommended types of pretreatment for the most frequently used substrates are:

Substrate	Pretreatment
Aluminium	Chromate conversion
Steel	Zinc phosphate
Zinc coated steel	Zinc phosphate or chromate conversion
Final rinse (deionized)	The last running water from the object should be tested at 20 °C. The readings obtained should measure below 30 µS/cm.

Suitable chrome-free pretreatment for aluminium is also recommended. Due to the variety of chrome-free pretreatments available today, only the approved systems from Qualicoat and GSB should be used. Detailed advice should be sought from the pretreatment supplier.

Curing



Equipment

Suitable for Corona or Tribo charging equipment.

APPEARANCE

Colour

Available in RAL, NCS and in a wide assortment of custom-made colours, this coating provides a variety of effects, including metallic. Also available in the Cool Shades Collection - a selection of colours with heat-reflective properties.

Gloss

EN ISO 2813 (60°)	
Series 1301	12 ± 5
Series 1303	30 ± 5
Series 1307	77 ± 7
Series 1308	90 ± 10

If the significant surface is too small or unsuitable for the gloss to be measured with the glossmeter, the gloss should be compared visually with the reference sample (from the same viewing angle).

Gloss measurements of metallic effect coatings can show deviation from original levels specified in this document and visual comparison with the reference sample is recommended.

Gloss range used in TDS and on the label of the metallic effect coatings represents gloss of the base and not of the final finish.

PERFORMANCE

The technical data provided below are typical for this product when applied as follows:

Substrate	Chromated aluminium panels
Substrate thickness (mm)	0.8
Film thickness (µm)	60-90

Typical values when tested.

Property	Standard	Result
Adhesion	EN ISO 2409 (2 mm)	Cross-cut rating Gt0 (100 % adhesion)
Impact resistance	EN ISO 6272 /ASTM D2794 (impactor diameter 15.9 mm)	More than 23 inch-pounds or 2.5 Nm without film cracking

Technical Data Sheet

Jotun Facade 1301, 1303, 1307, 1308



Cupping test	EN ISO 1520	Indentation depth in excess of 5 mm without film cracking
Flexibility	EN ISO 1519	Cylindrical Mandrel bending test, passes 5 mm Mandrel diameter
Film hardness	EN ISO 2815	Indentation resistance according to Buchholz: > 80
Mortar resistance	EN 12206-1	The mortar must be easy to remove without leaving any residues.
Drilling, milling and sawing test		No flaking of coating.
Humidity resistance containing SO₂.	EN ISO 3231 (0.2 l SO ₂)	No infiltration exceeding 1 mm on both sides of the scratch after 30 cycles.
Humidity resistance	EN ISO 6270-2	No infiltration exceeding 1 mm on both sides of the scratch after 1000 hours
Acetic acid salt spray resistance	ISO 9227	After 1000 hours testing – maximum 16 mm ² infiltration over a scratch length of 10 cm.
Accelerated weathering	DIN EN ISO 11507 (UVB - 313)	Cycle: 4 hours at 50 °C UV and 4 hours at 40 °C condensation. No chalking, excellent gloss retention and colour stability after 300 hours testing.
Natural weathering test	ISO 2810 (South Florida, 27 °N)	No chalking, excellent gloss retention and colour stability after 12 months exposure (angle of 5° to South).
Surface spread of flame	BS 476 Part 7 – 1997	Class 1
Fire propagation test	BS 476 Part 6 – 1989	Excellent index of performance (I=1)
Total Solar Reflectance*	ASTM C 1549	Grades 1303R, 1307R and 1308R: TSR ≥ 0.25

* Only applicable for the colours featured in 'The Cool Shades Collection'.

Approvals

This product is certified according to Qualicoat Class 1 and has weathering performance in line with AAMA 2603.
 Qualicoat:
 Facade 1301 - P-0546 (TH), P-1199 (TR)
 Facade 1303 - P-1559 (TR)
 Facade 1307 - P-1560 (TR)
 Facade 1308 - P-1560 (TR)



Product guarantee

This product is backed by a 10-year product guarantee system when used on an architectural aluminium substrate, subject to terms and conditions.

Disclaimer

Technical Data Sheet

Jotun Facade 1301, 1303, 1307, 1308



The information in this document is given to the best of Jotun's knowledge, based on laboratory testing and practical experience. Jotun's products are considered as semi-finished goods and as such, products are often used under conditions beyond Jotun's control. Jotun cannot guarantee anything but the quality of the product itself. Minor product variations may be implemented in order to comply with local requirements. Jotun reserves the right to change the given data without further notice.

Users should always consult Jotun for specific guidance on the general suitability of this product for their needs and specific application practices.

If there is any inconsistency between different language issues of this document, the English (United Kingdom) version will prevail.

Hardware.

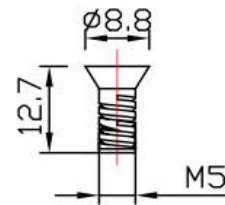
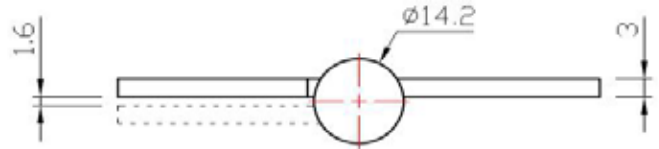
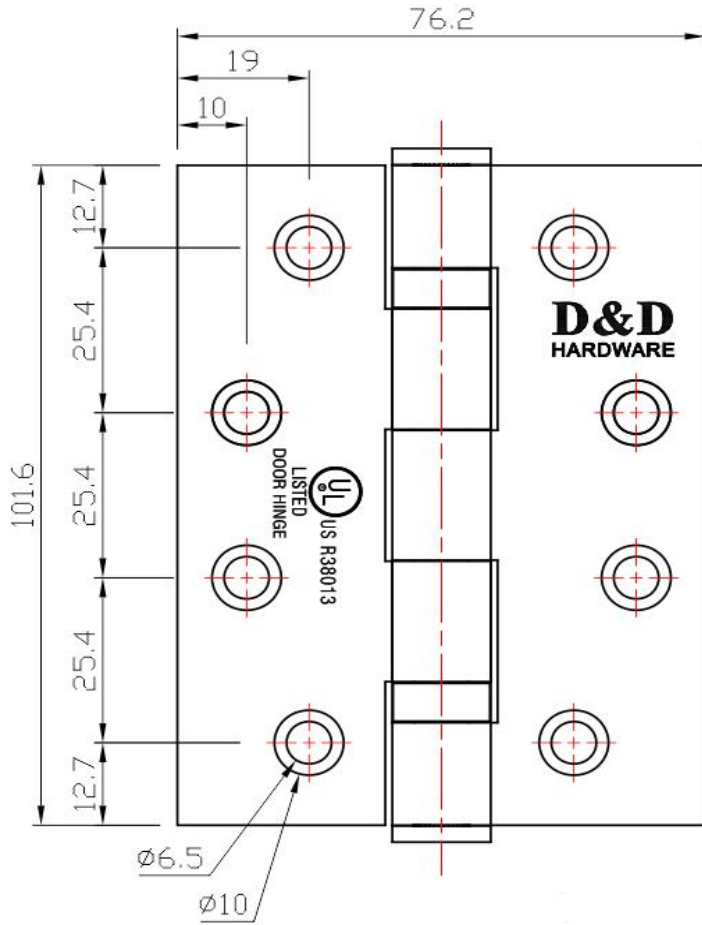
HARDWARE LISTS

SL NO	ITEM NAME	DESCRIPTION	MFR.	FINISH
1	Ball Bearing Hinges	DDSS001 (4"x3"x3mm)	D&D	SSS
2	Touch Bar Panic Latch	DT1500RA	Finley	SIL
3	External Trim	017P	Oubao	SSS
4	Door Closer	DDDC018	D&D	SIL
5	Door Stopper	DDDS001	D&D	SSS



Product Data Sheet

Feature Description: Fire rated door hinge , high quality assurance.



Machine screws
8 pcs



- *Material in SUS304 Satin Finish
- *Size - 4x3x3.0mm-2BB
- *Match with Metal Screws
- *Recommendation - 3 pcs per door
- *Door weight capacity - 60-80kg per door
- *Application for Wooden doors or Metal doors

Certificate:

UL/cUL Listed-3 hours Fire-rated certification, file No. R38013, according to NFPA80.

Suitable for fire rate steel door and wooden doors

D&D HARDWARE INDUSTRIAL

Item No.

DDSS001

Item

SS Door Hinge

CERTIFICATE OF COMPLIANCE

Certificate Number 20171030-R38013
Report Reference R38013-20171030
Issue Date 2017-OCTOBER-30

Issued to: D&D Hardware Industrial Co Ltd
No.4 Bldg, Street33, West Gaoxin Rd
High-Tech Zone
Jianghai Dist
Jiangmen
Guangdong 529000 CHINA

**This is to certify that
representative samples of**

DOOR HINGES

Stainless steel ball bearing type hinges for use on swinging type fire doors rated up to and including 3 hours in Models:

DD-SS-4x3x3.0mm, DD-SS-4x3.5x3.0mm,
DD-SS-4x4x3.0mm, DD-SS-4.5x4x3.0mm,
DD-SS-4.5x4x3.4mm, DD-SS-4.5x4.5x3.0mm,
DD-SS-4.5x4.5x3.4mm, DD-SS-4.5x4x4.6mm,
DD-SS-4.5x4.5x4.6mm, DD-SS-4x4x3.4mm,
DD-SS-5x3x3.0mm, DD-SS-5x3.5x3.0mm,
DD-SS-5x4x3.0mm, DD-SS-5x4x3.4mm,
DD-SS-5x4.5x3.4mm, DD-SS-5x4x4.6mm,
DD-SS-5x4.5x4.6mm, DD-SS-5x5x4.6mm.

In total 18 Ball Bearing type Hinges.

Have been investigated by UL in accordance with the Standard(s) indicated on this Certificate.

Standard(s) for Safety: UL 10C, Positive Pressure Fire Tests of Door Assemblies.
CAN/ULC-S104, Standard Method For Fire Tests of Door Assemblies.

Additional Information: See the UL Online Certifications Directory at www.ul.com/database for additional information

Only those products bearing the UL Certification Mark should be considered as being covered by UL's Certification and Follow-Up Service.

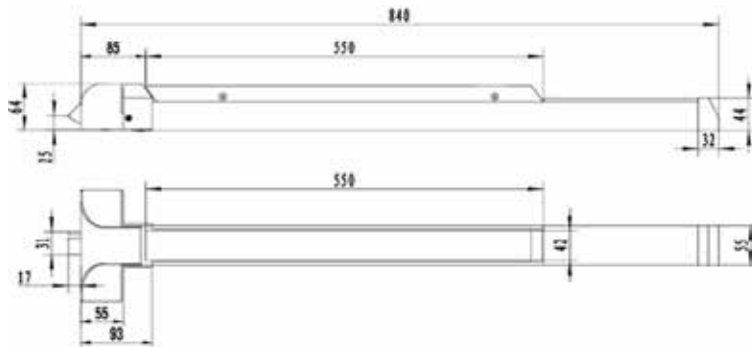


Bruce Mahrenholz, Director North American Certification Program
UL LLC

Any information and documentation involving UL Mark services are provided on behalf of UL LLC (UL) or any authorized licensee of UL. For questions, please contact a local UL Customer Service Representative at <http://ul.com/aboutus/locallicense/>



DT-F1500RA – TOUCHBAR PANIC LATCH



- ANSI A156.3, Grade 1 heavy duty exit device.
- Non-handed.
- Dogging function available (Optional)
- Finish : Silver



CERTIFICATE OF COMPLIANCE

Certificate Number 20190709-R38140
Report Reference R38140-20190626
Issue Date 2019-JULY-09

Issued to: HEFEI DORTEC AUTODOOR TECHNOLOGY MFG LTD
Changan Ind Area
Taohua Feixi
Hefei
Anhui 231200 CHINA

**This certificate confirms that
representative samples of**

FIRE-EXIT HARDWARE
USL, CNL:Fire Exit Device
Surface Vertical Rod Type Exit Device
DT-1000RA/VA, DT-1100RA/VA, DT-1200RA/VA,
DT-1500RA/VA

Have been investigated by UL in accordance with the
Standard(s) indicated on this Certificate.

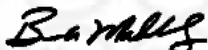
Standard(s) for Safety: ANSI/UL 10C - Positive Pressure of Fire Tests of Door
Assemblies
ANSI/UL 10B - Safety for Fire Tests of Door Assemblies
CAN/ULC-S104-15 - Standard Method for Fire Tests of
Door Assemblies

Additional Information: See the UL Online Certifications Directory at
<https://iq.ulprospector.com> for additional information.

This *Certificate of Compliance* does not provide authorization to apply the UL Mark. Only the UL Follow-Up
Services Procedure provides authorization to apply the UL Mark.

Only those products bearing the UL Mark should be considered as being UL Certified and covered under UL's
Follow-Up Services.

Look for the UL Certification Mark on the product.



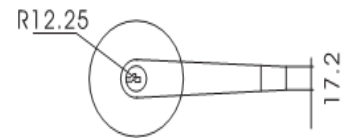
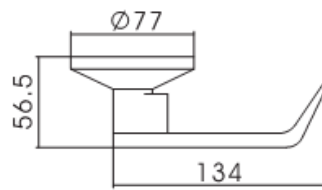
Bruce Mahrenholz, Director North American Certification Program
UL LLC

Any information and documentation involving UL Mark services are provided on behalf of UL LLC (UL) or any authorized licensee of UL. For questions, please
contact a local UL Customer Service Representative at <http://ul.com/aboutul/locations/>



External handle lock 017

Suit for DK-1710 P panic device



No handed,

Cylindrical body hardened steel, Heavy duty tailpiece

Material: Zinc or Stainless Steel

Rosette Diameter: 77 mm

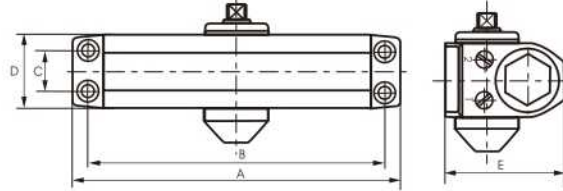
Level Length :134 mm Lever Projection: 57 mm

Supplied with 3 Keys.



DDDC017

UL Listed Certification
3 Hours Fire-Rated, File No.:R40717



Features

- UL listed, CE Certification.
- 500,000 Cycles Guaranteed In Endurance
- Two separate valves adjustable closing & latching speed
Work Temperature -30C To 60°c
- Universal Application: Standard, Top-Jamb Parallel Arm installation

Cross References

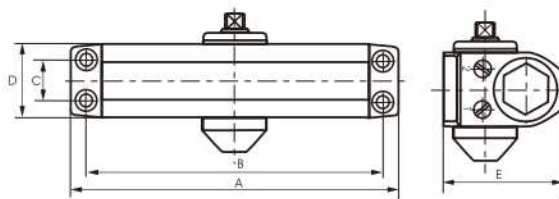
D&D	NORTON	CORBIN	DORMA	LCN	RUSSWIN	YALE	TAYMOR	PARKER
DC017	1600	100	TS77&MA200	1050	2800	50	9500/60	500

Type	A	B	C	D	E	Door Width(mm)	Suit for Door Weight(kg)
DDDC017	248	230	19	44.5	72	1100	60-85
DDDC017BC	248	230	19	44.5	72	1100	60-85



DDDC018

UL Listed Certification
3 Hours Fire-Rated, File No.:R40717



Features

- UL listed, CE Certification.
- 500,000 Cycles Guaranteed In Endurance
- Two separate valves adjustable closing & latching speed
Work Temperature -30C To 60°c
- Universal Application: Standard, Top-Jamb Parallel Arm installation

Cross References

D&D	NORTON	CORBIN	DORMA	LCN	RUSSWIN	YALE	TAYMOR	PARKER
DC018	1600	100	TS77&MA200	1050	2800	50	9500/60	500

Type	A	B	C	D	E	Door Width(mm)	Suit for Door Weight(kg)
DDDC018	248	230	19	44.5	72	1250	80-120
DDDC018BC	248	230	19	44.5	72	1250	80-120

CERTIFICATE OF COMPLIANCE

Certificate Number 20211230-R40717
Report Reference R40717-20211230
Issue Date 2021-DECEMBER-30

Issued to: D&D HARDWARE INDUSTRIAL CO LIMITED
 12TH FLOOR, BUILDING 2, NO.898
 KECHUANG TECHNICAL ZONE
 JIANGMEN AVENUE, PENGJIANG DISTRICT
 JIANGMEN
 GUANGDONG 529000 CHINA

**This is to certify that
 representative samples of**

SWINGING FIRE DOOR CLOSERS

For Self-Closing Doors, Surface-Mounted Type Model(s)
 DDDC044A, DDDC045, DDDC007, DDDC010,
 DDDC012, DDDC015, DDDC016, DDDC016BC,
 DDDC017, DDDC017BC, DDDC018, DDDC018BC,
 DDDC019BC, DDDC020BC, DDDC021BC, DDDC022,
 DDDC023, DDDC024, DDDC025BC, DDDC026,
 DDDC026BC, DDDC027, DDDC027BC, DDDC028,
 DDDC029, DDDC030, DDDC031, DDDC032, DDDC033,
 DDDC034, DDDC035, DDDC036, DDDC037, DDDC038,
 DDDC038BC, DDDC039, DDDC039BC, DDDC040,
 DDDC040BC, DDDC041BC, DDDC042, DDDC043,
 DDDC044

For Self-Closing Doors, Without Hold-Open Feature,
 Concealed Mounted Type, Size 2 Model(s) DDDC005UL

Note - Above Devices Have Been Evaluated in Accordance
 With Standard UL 10C Designed to be Used With Swinging

Construction & Completion of Countryside Residential Villa



Submittal Form

Reference No.	MS-1288-CVL-019	Revision No.	00	Date:	24-05-21
Project Name:	Construction & Completion of Countryside Residential Villa				
Location:	Plot No.5B Sector Al Reef, Al Hilli Al Ain - U.A.E.				
Client:					
Consultant:	Bainona Engineering Consultancy L.L.C.				
Contractor:	Al Eslah General Contracting Est.				

TYPE		DIVISION		SUBMITTED FOR	
Shop Drawing [SD]	Manufacturer's Data [MD]	ARCHITECTURE	X	APPROVAL	1
Calculation [CA]	Certificates [CT]	STRUCTURE		INFORMATION	2

CERTIFICATE OF COMPLIANCE

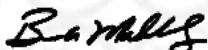
Certificate Number 20211230-R40717
Report Reference R40717-20211230
Issue Date 2021-DECEMBER-30

Standard(s) for Safety: UL 228 - Door Closers-Holders, With or Without Integral Smoke Detectors
UL 10C, Standard for Safety for Positive Pressure Fire Tests of Door Assemblies

Additional Information: See the UL Online Certifications Directory at www.ul.com/database for additional information

Only those products bearing the UL Certification Mark should be considered as being covered by UL's Certification and Follow-Up Service.

Look for the UL Certification Mark on the product.



Bruce Mahrenholz, Assistant Chief Engineer, Global Inspection and Field Services

UL LLC

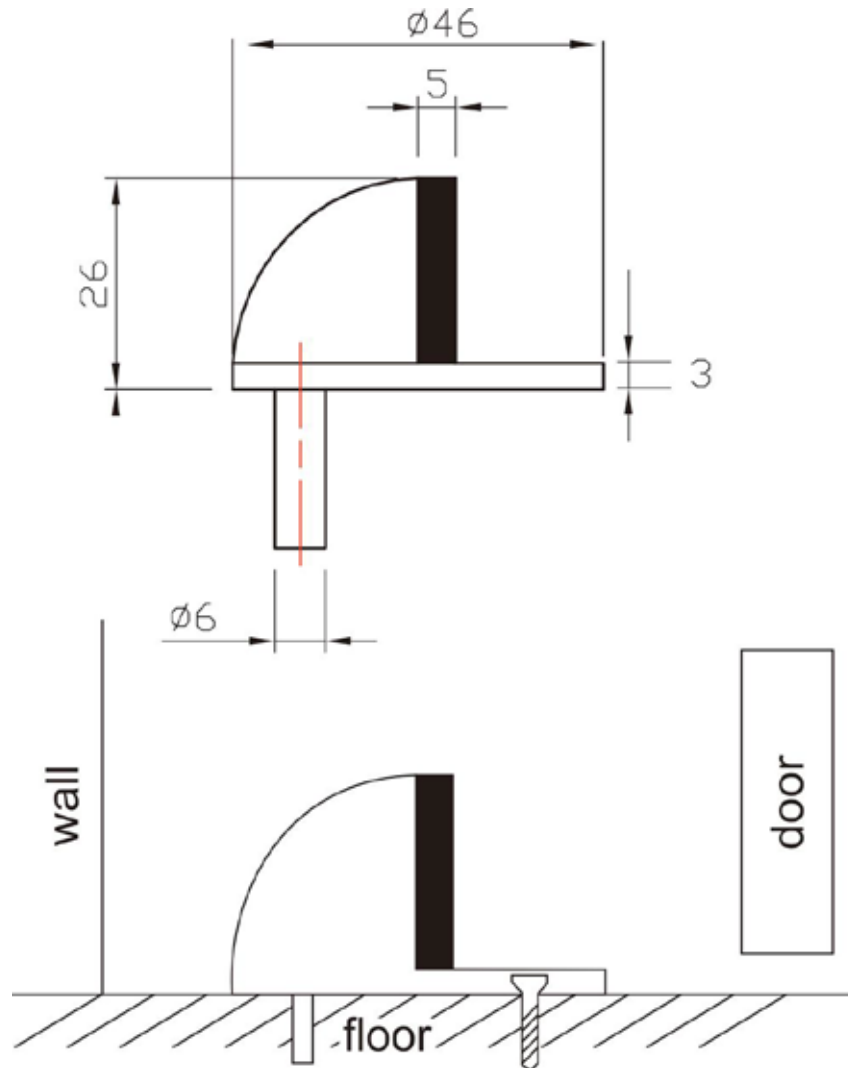
Any information and documentation involving UL Mark services are provided on behalf of UL LLC (UL) or any authorized licensee of UL. For questions, please contact a local UL Customer Service Representative at www.ul.com/contactus





Product Data Sheet

Feature Description: **Floor mounted type**, Hemisphere Door Stopper, high quality assurance.



- *Material SUS304 in Satin Finish
- *Size - 46x26mm
- *Match with Screws
- *Floor mounted type
- *Application for Wooden doors or Metal doors



**D&D HARDWARE
INDUSTRIAL CO.,LTD**


Item No.

DDDS001


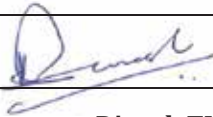
Item


Door Stopper

Method Statement.

	General Method Statement for Manufacturing and Inspection of Fire doors	Date: 13.09.2021
		Page 1 of 7
		BFE-FD-MS-001

General Method Statement for Manufacturing and Inspection of Fire doors

				
0	Jishan Ali	Dinesh TK		[13/09/2021]
Rev. 0	Prepared by QA/QC ENG.	Reviewed by QA/QCMGR	Approved by Client	Date of Issue
DOCUMENT REVISIONS				

	General Method Statement for Manufacturing and Inspection of Fire doors	Date: 13.09.2021
		Page 2 of 7
		BFE-FD-MS-001

I. Table of Contents

1. Purpose..... 3


2. Scope 3

3. References..... 3

4. Roles & Responsibilities..... 3

5. Method.....[3](#)

6. Inspection and Testing.....[6](#)

	General Method Statement for Manufacturing and Inspection of Fire doors	Date: 13.09.2021
		Page 3 of 7
		BFE-FD-MS-001

1. Purpose

- 1.1 The purpose of this method statement is to control production activities and to ensure timely job completion through programming/Planning the required work and resources and monitoring actual progress.

2.0 Scope

- 2.1 This method statement is applicable for all activities, processes and resources involved in the production of fire doors.

3.0 Reference

- 3.1 QHSE Manual
- 3.2 SOP Control of Non-conforming products
- 3.3 SOP inspection and testing
- 3.4 SOP Equipment maintenance
- 3.5 SOP Corrective actions
- 3.6 SOP Control of Monitoring, Measuring & Testing Equipment
- 3.7 BS 476


4.0 Roles & Responsibilities

- 4.1 This procedure is the responsibility of the Business Development Manager, Sales Manager, Production Manager, Stores Purchase Controller, Supervisor Technicians, and Workers.

5.0 Method

5.1 Production Planning

- 5.1.1 Customers written orders are forwarded to the Production Manager for scheduling purposes (Refer to SOP Integrated Master Plan/ & SOP Integrated Master Schedule).

	General Method Statement for Manufacturing and Inspection of Fire doors	Date: 13.09.2021
		Page 4 of 7
		BF E-FD-MS-001


- 5.1.2 The Store and Purchase Controller shall prepare a “Finished goods List” detailing available stocks of “BRISTOL” brand name as requested by the Production manager. The list shall be forwarded to the Production Manager for review and replenishment purposes, as seen appropriate.
- 5.1.3 As requested by the Production Manager, Store and Purchase Controller shall prepare a “Semi-Finished goods List” detailing available semi-finished product stocks. The list shall be forwarded to the Production Manager for review and replenishment purposes, as seen appropriate.
- 5.1.4 Production priority is given to customer orders. However, the Production Manager will plan production activities in a way, which will ensure timely orders completion taking into account maximum production capacity utilization.
- 5.1.5 The Production Manager shall prepare an “Integrated Master Plan-Weekly Production Plan” in which he specifies jobs to be executed, expected production quantities and man-hour requirements (refer to SOP Integrated Master Plan).

5.2 Job Orders


- 5.2.1 A “Job Notification Form” is manually filled by the Production Manager and forwarded to the Stores. Details about product(s) specifications, quantities, job starting date and expected completion date shall be documented in the aforementioned notification form.
- 5.2.2 Based on job requirements, the Store and Purchase Controller shall assign the job a number and prepare a “Production Request” with product(s) specifications and quantities details. The request shall be forwarded to the Production Manager for execution purposes.

5.3 Production Control

- 5.3.1 Standard products specifications are documented in “Fire Extinguishers Specifications and Instructions”.
- 5.3.2 Job Materials requirements are documented by the Production Manager in a “Material Requisition” and forwarded to the stores.

	General Method Statement for Manufacturing and Inspection of Fire doors	Date: 13.09.2021
		Page 5 of 7
		BF-MS-001

- 5.3.3 Required materials are issued to the production through filling a “Store Issue Voucher” which will be signed by the Production Manager upon safe and complete materials receipt.
- 5.3.4 Production Technicians shall continuously supervise and monitor shop floor production activities and provide guidance and instructions to workers as needed.
- 5.3.5 **Fire Door Main Assembly** is done through following processes.
- 5.3.6 Cutting/Punching: Cutting the sheet into required design dimensions.
- 5.3.7 Bending: Giving angle to the precut sheet to achieve the target shape for specific fire door parts.
- 5.3.8 Reinforcements: adding reinforcement for hinges and locks mounting by means of welding.
- 5.3.9 Door-in-Fill: place the door infill to support the fire door strength.
- 5.3.10 Assembly: assembling various mechanical parts and components of the Fire Door.
- 5.3.11 Grinding and Polishing: Removal of excess welds and to make the surface even and smooth
- 5.3.12 Coating: Application of coating to the doors.
- 5.3.13 Packing: Packaging the finished fire doors
- 5.3.14 **FRAME Assembly** is done through following processes.
- 5.3.15 Cutting/Punching: Cutting the sheet into required design dimensions.
- 5.3.16 Bending: Giving angle to the precut sheet to achieve the target shape for specific fire door parts.
- 5.3.17 Reinforcements: adding reinforcement for hinges and locks mounting by means of welding. Also the frames are reinforced with steel sheet.
- 5.3.18 Assembly: assembling various parts to complete the frame shape.

	General Method Statement for Manufacturing and Inspection of Fire doors	Date: 13.09.2021
		Page 6 of 7
		BFÉ-FD-MS-001

5.3.19 Grinding and Polishing: Removal of excess welds and to make the surface even and smooth

5.3.20 Coating: Application of coating to the doors.

5.3.21 Packing: Packaging the finished fire doors.

6.0 Inspection and testing of fire doors

Work In Process/ Final Inspection

All Inspection and testing during the process of carrying out the production or job shall follow the Inspection and Testing Plan (ITP) as part of the Integrated Master Plan (IMP) refer to SOP Integrated Master Plan for the specific Project.

General

Work in process and final inspection and testing for various activities carried out by the company have been defined in relevant Checklists.

Inspection checklists shall contain: inspection points, characteristics, results, authorities and dates.

Conforming products shall undergo further processing/ dispatch on production floor, while non-conforming products are segregated and identified by a "NCR-Product" according to SOP, Control of Nonconforming Product.

All reworked products shall be re-inspected according the original inspection criteria. Records of re-inspection shall be maintained.


6.1 Work In Process Inspection – Fire Doors

6.1.1 All parameters and measurement will be based on the drawing of fire doors.

6.1.2 The In-Process Inspection shall cover the following stages (Refer to Production & Service Provision).

6.1.3 Door Dimensions and measurements : (Acceptance tolerance : ± 1.0 mm)

Polishing: surface smoothness

	General Method Statement for Manufacturing and Inspection of Fire doors	Date: 13.09.2021
		Page 7 of 7
		BF-E-FD-MS-001

6.1.4 In process inspection shall be carried out by skilled workers only. Inspection will be done through sampling of every job opened. (1 every 10 fire door that will be produced)

6.1.5 Result will be recorded in the “In-Process Inspection Checklist – Fire Door” by the inspector showing the results of the inspection.

6.2 Final Inspection- Fire doors

6.2.1 The final inspection shall cover three main areas.

6.2.2 Dimension Checking (± 1.0 mm tolerance)

6.2.3 Surface quality (Coating / Visual)

Quantity Inspection of Fire Door Hardware

6.2.4 All final inspections and tests shall be carried out by Technician/ skilled workers. The inspection shall cover all products (100% inspection).

6.2.5 Upon completion of inspection, results will be recorded in the “Final Inspection Checklist - Fire Doors” by the inspector showing inspection results.

6.2.6 All conforming products are subsequently packaged and stored/ dispatched to the customer.

7.0 Forms/Records

Formats / Record / Annex No.	Record	Location	Retention
-	Inspection & Testing Plan (ITP)	QA/QC Eng.	5 years
F-BFE-11-01	Inspection Checklist – BS	QA/QC Eng.	5 years
F-BFE-11-04	Final Inspection Checklist – Fire Doors	QA/QC Eng.	5 years

Previous Approvals.

Contract No./Name: 2101-248





Abu Dhabi Ports Project




PROJECT TITLE


Contract No. 2101-248
Title: South Quay GC Terminal - Infrastructure Works

Material Approval Request for FIRE RATED DOORS Using for Building Works (Plot -D)
Manufacturer/Supplier: M/S BRISTOL Fire Engineering LLC Abu Dhabi, U.A.E./
M/S CONCORDE Technical Establishment LLC Abu Dhabi, U.A.E.

CONTRACTOR'S VERIFICATION STAMP	
We, Saif Bin Darwish, verify that this contractor's document	
<ul style="list-style-type: none"> Has been produced and checked in accordance with contractor's quality assurance plan Is of a standard that will enable the employer to accept it in accordance with the contract Complies with all requirements of the contract 	
Following deviations to contract are referenced for which a dispensation has been accepted by the employer: None	
Other related letters/CITs which document clarifications associated with this document are listed below: None	
Consultant/Contractor's Project Manager:	
Engr. Emad Ibrahim Al Tawil	  23.08.2021
Project Manager	Signature _____ Date _____

DOCUMENT STATUS STAMP	
Sangeeth Kumar 09.09.21  Abu Dhabi Ports	
<input type="checkbox"/> Code 1:	Work may proceed.
<input type="checkbox"/> Code 2:	Revise & Resubmit Work may proceed subject to incorporation of comments indicated.
<input type="checkbox"/> Code 3:	Revise & Resubmit Work may not proceed.
<input type="checkbox"/> Code 4:	Review not required. Work may proceed.
The statement "Work may proceed" applies to the following work activities associated with the matters contained within the contractor's document: Any review, comment or acceptance by employer under this contract with respect to any of contractor's documents shall not in any way be, or deemed to be, an approval of any works or an acceptance that the contractor's documents meet the requirements of the contract, as contractor has the sole responsibility for performing the works in accordance with the requirements of this contract.	

Document Number: 2101-248-V4- 8000-00030

				
001	23-Aug-2021	Issued for Approval	Building Div./Jinto V.K	Eng.Mahmoud Hamed
Rev	Date	Reason For Revision	Prepared	Checked
				Approved

Holders of registered copies receive revisions to this document, should they occur, with a request that the superseded copy be destroyed. Registration of copies ceases at taking over date. The revision number is included at the end of the document number, which is noted in the right of the bottom of each page. When amendments occur, the whole document is re-issued with the revision number updated accordingly.

- Revisions are shown in italics. Deletions are hidden. Earlier additions revert to normal text in subsequent amendments
- The QA Manager reviews and the project Manager approves amendments by signature on the cover sheet to the document
- The document controller maintains a Register of the holders of this document
- Amendments to the document are distributed according to (1) above and this I reflected in the register

The document controller keeps the original of the latest version of this document

Sherif Mohammed
ADNOC HQ

Final (WF-008122) ADNOC - Construction - MAR (Arch) -...
WORKFLOW TRANSMITTAL

11:47 AM
ADNOC HQ-WTRAN-026769

CONSTRUCTION OF GROUP SERVICE HUB

ADNOC HQ
ADNOC HQ
United Arab Emirates

**MAIL TYPE**

Workflow Transmittal

MAIL NUMBER

ADNOC HQ-WTRAN-026769

REFERENCE NUMBER

ADNOC HQ-WTRAN-026769

Final (WF-008122) ADNOC - Construction - MAR (Arch) - Rev.0 - Ver.1

From Mr Sherif Mohammed - ADNOC HQ

To (6) Mr Omar Al Ramahi - ADNOC HQ (+5 more...)

Cc Mr Ameer Bahaisami - ADNOC HQ

Sent Tuesday, 7 September 2021 11:47:33 AM GST (GMT +04:00)

Status N/A

DOCUMENT ATTACHMENTS (1)

File	Document No	Revision	Revision Date	Title	Status
	MAR-4700006964-C-0096	0	01/09/2021	MAR FOR METAL DOORS (NON - FIRE RATED AND FIRE RATED STEEL)	B - Approved with Comments

MESSAGE**Workflow Review History**

The attached documents have completed the "ADNOC - Construction - MAR (Arch) - Rev.0 - Ver.1" workflow with the following results :

This transmittal was automatically generated.

Doc No	Step	Participant	Review Outcome	Comments
MAR-4700006964-C-0096	ADNOC DC QA Check	R Juliano	A-Approved	
	ADNOC Sr. Discipline Eng. Review	O Al Ramahi	B-Approved with Comments	1. Proposed materials are accepted in principle, Color

REQUEST FOR APPROVAL OF SHOP DRAWING

Project Name: Comm. Devt for Mr. Mohammed Salem Mohammed Al Rashidi File No. 2696
 Consultant: Bainona Engineering Consultancy Ref No. AGCE/2696/SD/CIV/098-0
 Contractor: Al Eslah General Contracting Est. Date: 25/Jul/21

S: Structural A: Architectural E: Electromechanical O: Others

Document Description : Shop Drawings -HALLOW METAL STEEL DOOR FRAME, ELEVATION, SECTION AND DETAILS

for Gas panel Door for Corridor and above ceiling.

Dwg ref #	Rev	Subject	No of copies	status
BRFD-FD-MA-21-154-00	0	HALLOW METAL STEEL DOOR FRAME, ELEVATION, SECTION & DETAILS	2	
BRFD-FD-MA-21-155-00	0	HALLOW METAL STEEL DOOR FRAME, ELEVATION, SECTION & DETAILS	2	

BAINONA Engineering Consultancy
 Project 1421
 Mohamed Salem Al Rashidi
 Sector RBW-2, Plot No 4
25 JUL 2021
 3:12 pm
RECEIVED

Submitted Document Details

Document Name:

Remarks

Originator of the submittal/ Eng. Akram Issa Mob. No. 054-9952140
 Contractor Authorizes signature Date: 25/Jul/21

AL ESLAH GENERAL CONT. EST.
 BLDG. : MOHAMMED AL RASHIDI
 PROJ.NO. : ESL/02-22/125

Consultant Comments:

- Sample/Color to be submitted for client approval.
- Refer to consultant comments in Material submitted.
- Access panel dimension to be coordinate with MEP dwg/Department.
- Location for access panel in Corridor area to be submitted for approval.
- Submit drawing for Gas access panels location above false ceiling & Corridor (Emergency buttons) in co-ordination with other trades.
- Submit location of Access panels in Shaft for drainage risers, Submit drawings for approval.

A: Approved B: Approved as noted C: Revise & Resubmit D: Not Approved

Reviewer of the submittal: Eng. **BAINONA** Mob. No. _____
 Consultant Authorizes signature: **BAINONA** Date: 21/8/21

Approval or Comments does not relieve the contractor from his contractual obligations & responsibilities

BAINONA
 Engineering Consultancy
 Mohamed Salem Al Rashidi
 Sector RBW-2, Plot No 4
 Abu Dhabi

V 2.1/10 Apr 2014



ADCE

Abu Dhabi Commercial Engineering Services



AL DIYAR GENERAL CONTRACTING CO. LLC
شركة الديار للمقاولات العامة

ABU DHABI COMMERCIAL ENGINEERING SERVICES
REQUEST FOR APPROVAL OF SPECIFIED MATERIALS

Project Name: Comm. Bld. for Mr. Abdulla Khalfan Matar Saeed Al Romaihi File No. 929
Consultant: Hannover Consulting Engineers Ref No. P233-MTS-C-086-R2
Contractor: AL Diyar General Contracting Company L.L.C Date 11-Aug-21

- S:Structural A:Architectural E:Electromechanical O:Others

Item description : FIRE RATED DOORS

List of Supplier/ Manufacturer as per specification

Item description	References (pages and item numbers) in:
1- Nafco Electromechanical Company.	1- Section Z.9 / P. 309
2- Bristol Fire Engineering LLC.	2-
3- Alumil Middle East DMCC	3-
4-	4-

Submitted Material Details

Supplier/ Manufacturer Name: Bristol Fire Engineering LLC Catalogue No.
Brand Name: Bristol Reference pages in the catalogue:
Applicator name: Al Diyar General Cont. Co. LLC Model/ Article Nos.
Remarks: 3 hard copies+CD+samples

Originator of the submittal/ Eng.: Ghias Fayoumi Mob. No. 055 5565358
Contractor Authorizes signature: Date: 8/11/2021

The Contractor Statement: We certify that the materials submitted herewith has been reviewed in details and in compliance with the contract drawing and specifications except as otherwise stated hereabove.

Consultant Comments: * Approved in for the powder coating color selection & Ironmongery items only for steel doors
* Our selected color is John-Ploy-RAL 9006 & Ref. to his comments on attached documents for the sample Board for Ironmongery & the provided laboratory test report with the test number are not matching the list of approved test from ADDO test list & to Revise the steel doors according to comments on documents & physical sample & * To provide the Country of origin certificates of Ironmongery as per Com. OK Revise the steel doors as per attached.
 A: Approved B: Approved as noted C: Revise & Resubmit D: Not approved

Reviewer of the submittal: Eng. Fahdy Mob. No. 18.08.21
Consultant Authorizes signature: Date: 18.08.21

Approval or Comments does not relieve the contractor from his contractual obligations & responsibilities

- A: Approved B: Approved as noted C: Revise & Resubmit

RECEIVED
Date: 2 AUG 2021

All the supportive documents must be presented and filed at project site.
The Alternative materials should be submitted to ADCE for review with all the supportive documents, catalogs and compliance chart

Job No: -233
Date: 2 AUG 2021
P.O.Box: 45310 - Abu Dhabi



P2330



**ABU DHABI COMMERCIAL ENGINEERING SERVICES
REQUEST FOR APPROVAL OF SPECIFIED MATERIALS**

Project Name: Comm. Devt for Mr. Mohammed Salem Mohammed Al Rashidi File No. 2696
 Consultant: Bainona Engineering Consultancy Ref No. AGCE/2696/MAT/ARC/089
 Contractor: Al Eslah General Contracting Est. Date 25/Jul/21

Structural Architectural Electromechanical Others

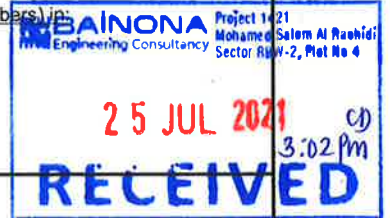
Item description : Gas Panel Door

List of Supplier/ Manufacturer as per specification

- 1-
- 2-
- 3-

References (pages and item numbers) in:

- 1- BOQ: 3.2.1.6.2
- 2- Particular Specs:
- 3- General Specs.
- 4- Drawings No.



Submitted Material Details

Supplier/ Manufacturer Name: Concord/Bristol Catalogue No.
 Brand Name: Reference pages in the catalogue:
 Applicator name: Concord Technical Est Model/ Article Nos.
 Remarks:

Originator of the submittal/ Eng.: Eng. Akram Issa Mob. No. 054-9952140
 Contractor Authorizes signature:  Date: 25/Jul/21

The Contractor Statement: We certify that the materials submitted herewith has been reviewed in details and in compliance with the contract drawings and specifications except as otherwise stated hereabove.

Consultant Comments:

Refer to Consultant Comments in attached Comment sheet.

A: Approved B: Approved as noted C: Revise & Resubmit D: Not Approved

Reviewer of the submittal: Eng.  Project 1421 Mob. No. 054-9952140
 Consultant Authorizes signature:  Date: 21/8/2021
 Approval or Comments does not relieve the contractor from his contractual obligations & responsibilities

ADCE (Abu Dhabi Commercial Engineering) Received

A: Approved B: Approved as noted C: Revise & Resubmit D: Not Approved

Date: _____

All the supportive documents must be presented and filed at project site.

The Alternative materials should be submitted to ADCE for review with all the supportive documents, Original catalogues and compliance chart



Procedures for Transmittals Action

Attachment To Transmittal Sheet

Project name :	Commercial Development for Mr. Moh. Salem Moh. Al Rashedi		
Contractor :	Al Eslah General Contracting Est.		
Transmittal :	AGCE-2696-MAT-CIV-089	Rev.00	Date: 25 th July 2021
Description:	Material Submittal for Gas Panel Door Manufacturer: Concord/ Bristol		
Status:	<input type="checkbox"/>	Approved	<input checked="" type="checkbox"/> Approved as noted
	<input type="checkbox"/>	Revise & Re-submit	<input type="checkbox"/> Rejected

CONSULTANT RESPONSE:

Approved as Noted, subject to the followings:-

- The contractor and subcontractor shall be fully complied with the project specification, contract documents, drawings, Consultant's instruction and UAE Authorities requirements.
- Fire rated Access door to be comply the civil defense guidelines regarding the following:
 - Certificate of fire rating issued by an international certification agency.
 - Constructed to a British standard or equivalent.
 - Labeled by the testing agency.
 - Approved by Abu Dhabi Civil Defense.
- Final approval regarding Fabrication/Quality subject to mock up approvals.
- 5 years warranty certificate to be submitted from the date of T.O.C.
- All the warranty to be issued by the Supplier, Manufacturers recommendation which shall be counter-singed by the Main Contractor and both of them will be liable for repair and replace the items.
- Method of statement to be submitted.
- All manufactures recommendation and method of applications should be strictly followed.
- All safety measures should be strictly applied and maintained properly.
- This approval does not relieve the main contractor from full compliance with contractual obligations.
- **Consultant has a full right to reject any part of work which not complies with project specifications and quality requirements.**

Consultant Signature & Stamp

Date: 02nd Aug. 2021



Eng. Saleh Kurbaaj
Resident Engineer



ACE | المصن للامتحانات الهندسية ذم
 Al Ain Consulting Engineers LLC
 Tel: +9712 6273988, Fax: +9712 6276733, Email: info@ace-uae.net
 P.O. Box: 72267, Abu Dhabi - U.A.E. Website: www.ace-uae.net



SUB CONTRACTORS APPROVAL FORM

Project Name: Commercial Building for Mr. Ali Mohammed Musleh Jamhour Al Ahabbi **File No.** 583
Consultant: Al Ain Consulting Engineers LLC. **Ref No.** F10-PQ-0083 Rev.0
Contractor: FORCE 10 UAE LLC **Date** 5-Jul-21

Type of Work: Supply and installation of Metal Doors

Sub Contractor Name: M/s. Concorde Technical Est.

Company Profile Contents:

- prequalification
- valid trade license
- organization chart
- previous approvals



CONTRACTOR :

Originator of the submittal/ Eng.: Wajih Jrad **Mob. No.** 0502100250
Contractor Authorizes signature: *[Signature]* **Date:** 5-Jul-21



CONSULTANT COMMENTS:

Refer to the attached comments sheet.

Approval Status: A: Approved B: Approved as noted C: Revise & Resubmit D: Not Approved

Reviewer of the submittal/ Eng : *[Signature]* **Mob. No.** 617/2021
Consultant Authorizes signature: *[Signature]* **Date:** 6/7/2021



ADCE (Abu Dhabi Commercial Engineering) Received

V 2.1/10 Apr 2014

A: Approved B: Approved as noted C: Revise & Resubmit D: Not Approved

Date: _____

All the supportive documents must be presented and filed at project site.
 * (Approval does not relieve the Contractor from his contractual obligations and responsibilities)



**ABU DHABI COMMERCIAL ENGINEERING SERVICES
REQUEST FOR APPROVAL OF SPECIFIED MATERIALS**

Project Name: Mrs. Helala Mubarak Hazeem Al Khyeli File No. 2520
 Consultant: EBLA Engineering Consultant Ref No. AGCE/2520/MAT/CIV/078
 Contractor: Al Eslah General Contracting Est. Date 13-Jun-21

S: Structural A: Architectural E: Electromechanical O: Others

Item description : Fire Rated Steel Door

<u>List of Supplier/ Manufacturer as per specification</u>	<u>References (pages and item numbers) in:</u>
1- Bristol	1- BOQ: Ref No.
2-	2- Particular Specs.
3-	3- General Specs.
4-	4- Drawings No.

Submitted Material Details

Supplier/ Manufacturer Name: Concord Technical Est. Catalogue No.
 Brand Name: Bristol Reference pages in the catalogue:
 Applicator name: Al Eslah General Contracting Model/ Article Nos.
 Remarks:

Originator of the submittal/ Eng.: Mujeeb Rahman Mob. No. 056-4002576
 Contractor Authorizes signature: MRS. HELALA AL KHYELI Date: 13-Jun-21

The Contractor Statement: We certify that the materials submitted herewith has been reviewed in details and in compliance with the contract drawing and specifications except as otherwise stated hereabove.

Consultant Comments: ** Comply with all Authorities Requirements (ADCD & ... etc)*
** color approval for door & frames subject to Client approval*
** warranty certificate & fire rated certificate to be provided as draft for approval*
** comply with project drawing & spec's and check the actual dimensions at site before Installation*
** contractor not entitled for any claims (cost or time)*

A: Approved B: Approved as noted C: Revise & Resubmit D: Not Approved

Reviewer of the submittal: Eng. [Signature] Mob. No.
 Consultant Authorizes signature: [Signature] Date:
 Approval or Comments does not relieve the contractor from his contractual obligations & responsibilities

ADCE (Abu Dhabi Commercial Engineering) Received

A: Approved B: Approved as noted C: Revise & Resubmit D: Not Approved

Date: _____

All the supportive documents must be presented and filed at project site.
 The Alternative materials should be submitted to ADCE for review with all the supportive documents, Original catalogues and compliance chart



Received on
AL ISLAH GENERAL CONT. EST.
 BLDG. : MRS. HELALA AL KHYELI
 PROJ. NO. : 2520/01-22/124

V 2.1/ 10 Apr 2014

MATERIAL SUBMITTAL

TGC-PTV-MTS-CVL-009900/24
Rev. 00 16/Jun/2021

Project : TG2057- Private Villa @ Abu Dhabi
Employer: M/s. Trojan Holding
Consultant Engineer: APG-Architecture & Planning Group
Main Contractor : M/s. Trojan General Contracting LLC
Sub-Contractor : M/s. Concorde Technical Est



21 JUN 2021

TG-2057-ABU DHABI PRIVATE VILLA
RECEIVED
Sign

Description		Material Submittal for Fire Rated Doors	
SUB-CONTRACTOR / SUPPLIER	DISCIPLINE	AREA OF APPLICATION	SPEC. REF
M/s. Concorde Technical Est	Civil- Architectural	Fire Rated Doors	Fire Rated Doors

SAMPLE TECHNICAL DATA QCP / ITP
 TEST CERTIFICATE WARRANTY MSDS
 COMPLIANCE METHOD STATEMENT PREVIOUS APPROVALS

MANUFACTURER: M/s. Concorde Technical Est COUNTRY OF ORIGIN: U.A.E

PHONE : 025575551 Fax: 0255755550 Email: M/s. Concorde Technical Est

LOCAL AGENT: M/s. Concorde Technical Est

UAE N/A Fax: Email: N/A

Sub Contractor	Main Contractor	Received by Consultant	Others
Name: Engr. Antonio Ceci (Technical Manager)	Name: Engr. Antonio Ceci (Technical Manager)	Name:	01 Copy + 01 Shoft Copy
Signature	Signature	Signature	
Date: 16-Jun-21	Date: 16-Jun-21	Date:	
Name:	Signature	Date:	

Comments (Engineer/Consultant)

Approved shop Drawings to be followed.
 Manufacturer recommendation to be followed for installation
 Method of statement to be submitted.
 Approved material to be used.

A. Approved B. Approved with Comments C. Revise and Resubmit D. Rejected

Name: Engr. VISHAL JAISWAL Signature: [Signature] Date:

Comments (Client/Employer)

Warranty shall be for 3 years as per IFC documents
 Approved RAL Colour to be used.

A. Approved B. Approved with Comments C. Revise and Resubmit D. Rejected

Name: Name: Engr. Date:

Received by Contractor

Approved FR Ironmongery to be used.
 Subject to full compliance to the project specs. and subcontractors performance at site.



SHOP DRAWING SUBMITTAL

TGC-PTV-SDS-CVL-AR-115

Rev. 00

DATE: 05-07-2021

Project : TG2057- Private Villa @ Abu Dhabi
 Client: Trojan Holding
 Consultant / Engineer : APG - Architecture & Planning Group
 Main Contractor : Trojan General Contracting LLC
 Sub-Contractor : M/s. Concorde Technical Est / BRISTOL FIRE ENGINEERING LLC

Description of Item: Shop Drawing for Hollow Matal Steel Door Frame,Elevation,Section & Details

SUB-CONTRACTOR (Name and Ref.No)	DISCIPLINE	AREA OF APLICATION	SPEC.REF
Concorde Technical Est / BRISTOL FIRE	CVL-AR	Fire Reted Doors	Fire Reted Doors

SL NO	DRAWING NO.	REV	DRAWING TITLE	STATUS
1	BRFD-FD-MA-21-475-00	0	Hollow Matal Steel Door Frame,Elevation,Section & Details	B
2	BRFD-FD-MA-21-476-00	0	Hollow Matal Steel Door Frame,Elevation,Section & Details	B
3	BRFD-FD-MA-21-477-00	0	Hollow Matal Steel Door Frame,Elevation,Section & Details	B
4	BRFD-FD-MA-21-478-00	0	Hollow Matal Steel Door Frame,Elevation,Section & Details	B
5	BRFD-FD-MA-21-479-00	0	Hollow Matal Steel Door Frame,Elevation,Section & Details	B
6	BRFD-FD-MA-21-480-00	0	Hollow Matal Steel Door Frame,Elevation,Section & Details	B
7	BRFD-FD-MA-21-481-00	0	Hollow Matal Steel Door Frame,Elevation,Section & Details	B

Sub Contractor	Main Contractor	Received by Consultant	Others
Name: Signature: Date: 5-Jul-21	Name: Antonio Cecili (Technical Manager) Signature: Date: 5-Jul-21	Name: Signature: Date:	01 Copy

Comments (Engineer/Consultant)

- Fire & Acoustic Rating to be achieved
- Site Measurement to be obtained for fabrication.
- RAL Colour as per approval from the client.
- Door frame to be grouted or fill with suitable approved material
- Approved Material to be used.

A. Approved B. Approved with Comments C. Revised and Resubmit D. Rejected

Name: Nishant Jaiswal Signature: [Signature] Date: 6.7.21

Received by contractor



SUB CONTRACTORS APPROVAL FORM

Project Name: Commercial Building for Mr. Saeed Mabkhout Al Ameri
Consultant: Al Ain Consulting Engineers LLC
Contractor: Bildex Contracting Co. (Off-Shore) AD

File No. : 1168
Ref No.: Sub-Con-044
Date : 3-Jun-2021

Type of Work : PRE-QUALIFICATION FOR STEEL DOOR

Sub Contractor Name : M/s CONCORDE TECHNICAL EAST.

Company Profile Contents: prequalification valid trade license
 organization chart previous approvals

CONTRACTOR / SUPPLIER

M/s Concorde technical East. is the propose Sub Contractor for Steel Door

Originator of the submittal/ Engr. Mohamad Malkat
Contractor Authorized signature:

Mob. No. :
Date : 03 June 2021

CONSULTANT COMMENTS:

* refer to the enclosed sheet of comments.

Approval Status: A: Approved B: Approved as noted C: Revise & Resubmit D: Not Approved

Reviewer of the submittal/ Engr.
Consultant Authorizes signature:

Mob. No.
Date: 20/06/2021

ADCE (Abu Dhabi Commercial Engineering) Received

A: Approved B: Approved as noted C: Revise & Resubmit D: Not Approved

Date: _____

All the supportive documents must be presented and filed at project site.
* (Approval does not relieve the Contractor from his contractual obligations and responsibilities)





FORCE 10

Al Ain Consulting Engineers LLC
164- +9712 6373988 Fax: +9712 6378723 Email: info@ace-uae.ae
P.O. Box: 72507, Abu Dhabi - U.A.E. Website: www.ace-uae.ae



ADCE
المشرف التجاري للهندسة والخدمات
Abu Dhabi Commercial Engineering Services

ABU DHABI COMMERCIAL ENGINEERING SERVICES
REQUEST FOR APPROVAL OF SPECIFIED MATERIALS

Project Name: Obaid Al Mansouri Building - Al Raha Beach File No. 2399
Consultant: Al Ain Consulting Engineers LLC. Ref No. F10-MAS-C-0063-01
Contractor: FORCE 10 UAE LLC Date 9-Jun-21

S:Structural A:Architectural E:Electromechanical O:Others

Item description : Steel Fire Rated Doors - With Sample

List of Supplier/ Manufacturer as per specification

References (pages and Item numbers) in the catalogue

- 1- Naffco
 - 2- Bristol
 - 3- Firex
- 1- BOQ
 - 2- Particular Specs.
 - 3- General Specs.
 - 4- Drawings

10 JUN 2021
RECEIVED:
FOR SUPERVISION USE

Submitted Material Details

Supplier/ Manufacturer Name: M/s. Concorde Technical Est

Catalogue No.

Brand Name: Bristol

Ref. pages in the catalogue:

Applicator name: M/s. Concorde Technical Est

Model/ Article Nos.

Remarks:

Originator of the submittal/ Eng.: Yamen Hamed Mob. No. 00971 528115050

Contractor Authorizes signature: Date: 9-Jun-21

The Contractor Statement: We certify that the materials submitted herewith has been reviewed in details and in compliance with the contract drawing and specifications except as otherwise stated hereabove.

Consultant Comments:

Refers to the attached comments sheet.

A: Approved B: Approved as noted C: Revise & Resubmit D: Not Approved

Reviewer of the submittal: Eng.

Mob. No.

Consultant Authorizes signature:

Date:

Approval or Comments does not relieve the contractor from his contractual obligations & responsibilities

ADCE (Abu Dhabi Commercial Engineering) Received

A: Approved B: Approved as noted C: Revise & Resubmit D: Not Approved

Date: _____

All the supportive documents must be presented and filed at project site.

The Alternative materials should be submitted to ADCE for review with all the supportive documents, Original catalogues and compliance chart



Construction & Completion of Countryside Residential Villa



Submittal Form

Reference No.	MS-1288-CVL-019	Revision No.	00	Date:	24-05-21
Project Name:	Construction & Completion of Countryside Residential Villa				
Location:	Plot No.5B Sector Al Reef, Al Hilli Al Ain - U.A.E.				
Client:					
Consultant:	Bainona Engineering Consultancy L.L.C.				
Contractor:	Al Eslah General Contracting Est.				

TYPE	DIVISION	SUBMITTED FOR
Shop Drawing [SD]	ARCHITECTURE	APPROVAL 1
Calculation [CA]	STRUCTURE	INFORMATION 2
Material Specification [MS] X	MECHANICAL	COORDINATION 3
Sample [SP]	ELECTRICAL	ACTION
Method Statement [MOS]		APPROVED A
Guarantee [GT]		APPROVED AS NOTED B
Temporary Facilities [TF]		REVISE & RESUBMIT C
		REJECTED D
		INFORMATION E

S.N.	SUBMITTAL DESCRIPTION	REV.	RELATED DOCUMENT REF NO.	ACTION	Quantity
1	Hollow Metal Fire Rated Doors	00			
	Manufacturer / Supplier :	Concorde Technical Est			Hard Copy
	Brand Name:	Bristol			Soft Copy
	Country of Origin:	UAE			2
	BOQ Ref. / Clause No.:	Section 081113			1

Name & Signature: *[Signature]*
 Date: *[Date]*
 Project: Countryside Residential Villa For Master, Hilli, Sector: Al Kabeel
 Al Reef, Plot No. 5B - Al Hilli - Al Ain

Consultant Comments

Refer to The attached Consultant Comment sheet.

[Signature]

BAINONA Engineering Consultancy
 Project 1288
 Construction & Completion of Countryside Residential Villa
 Sector Al Reef, Plot No. 5B
 Al Hilli Al Ain

Client Comments

Name & Signature: _____
 Date: _____

Received by BAINONA from Al Eslah	ROUTING	Received by Client from BAINONA
Receiver Name	Receiver Name	Receiver Name
Designation	Designation	Designation
Date	Date	Date
Signature	Signature	Signature
Received by BAINONA from Client	Received by Al Eslah from BAINONA	
Receiver Name	Receiver Name	
Receiver	Designation	
Date	Date	
Signature	Signature	

BAINONA Engineering Consultancy
 Project 1288
 Construction & Completion of Countryside Residential Villa
 Sector Al Reef, Plot No 5B

RECEIVED
 30 MAY 2021
 3:55 pm

Procedures for Transmittals Action

Attachment To Transmittal Sheet

Project name :	Countryside Villa for Mr. Mohammed Hilal Souror Al Kabbi			
Contractor :	Al Eslah General Contracting Est.			
Transmittal :	MS/1288/CVL-0019	Rev.00	Date: 30-05-2021	
Description:	Request Approval for Material of Hollow metal doors. M/s Concorde Technical Est			
Status:	<input type="checkbox"/>	Approved	<input checked="" type="checkbox"/>	Approved as noted
	<input type="checkbox"/>	Revise & Re-submit	<input type="checkbox"/>	Rejected

CONSULTANT RESPONSE:

Approved as noted, Subject to the following comments.

- The contractor and subcontractor shall be fully complied with the project specification, contract documents, drawings, Consultant's instruction and UAE Authorities requirements.
- Mock-up of Hollow Metal doors should be execution at site for consultant approval before start project activity.
- Final approval regarding Fabrication/Quality subject to mock up approvals.
- 5 years warranty certificate to be submitted from the date of T.O.C.
- Performance certificate to be submitted upon completion.
- All the warranty to be issued by the Supplier, Manufacturers recommendation which shall be counter-singed by the Main Contractor and both of them will be liable for repair and replace the items.
- Details shop drawing to be submitted.
- Method of statement to be submitted.
- All manufacture's recommendation and storage should be strictly followed.
- Color chart / Accessories catalogue shall be provided for consultant approval.
- This approval does not relieve the main contractor from full compliance with contractual obligations.
- **Consultant has a full right to reject any part of work which does not comply with project specifications and quality requirements.**

Consultant Signature & Stamp



BAINONA
Engineering Consultancy
مكتب الاستشارات الهندسية
P.O.Box: 5666, Abu Dhabi, UAE

Eng. Mohamed Ashiry

Resident Engineer.

Date: 06th May 2021.



SUB CONTRACTORS APPROVAL FORM

Project Name: Obaid Al Mansouri Building -Al Raha Beach **File No.** 2399
Consultant: Al Ain Consulting Engineers LLC. **Ref No.** F10-PQ-C-0035-2
Contractor: FORCE 10 UAE LLC **Date** 12-Apr-21

Type of Work: Steel Doors

Sub Contractor Name: M/s. Concorde Technical Est

Company Profile Contents:

- prequalification valid trade license
 organization chart previous approvals

CONTRACTOR :



Originator of the submittal/ Eng.: Yamen Hamed ابو ظبي **Mob. No.** +971 528115050

Contractor Authorizes signature: [Signature] **Date:** 12-Apr-21

CONSULTANT COMMENTS:

* Subject to performance of sub-contractor in the project.
 * Subject to fully comply with project specifications of contract.

Approval Status: A: Approved B: Approved as noted C: Revise & Resubmit D: Not Approved

Reviewer of the submittal/ Eng : [Signature] **Mob. No.**

Consultant Authorizes signature: [Signature] **Date:**

ADCE (Abu Dhabi Commercial Engineering) Received

A: Approved B: Approved as noted C: Revise & Resubmit D: Not Approved

Date: _____

All the supportive documents must be presented and filed at project site.
 * (Approval does not relieve the Contractor from his contractual obligations and responsibilities)



Sub-Contractor / Supplier Submittal Form

Record Reference: MCE-SKMC-311-F-SSF-CI-017	Date: 20/03/2021
Project Details:	
Project Name: Rehabilitation of Wing "F" – SKMP – SKMC	
Client: Abu Dhabi Health Services Co. (SEHA)	
Engineer: Morgan Consulting Engineers (MCE)	Contractor: El Race Cons. & Gen. Cont. Co. L.L.C
IR No: MCE-SKMC-311-F-SSF-CI-017	Rev No: 00

Discipline	<input checked="" type="checkbox"/> Civil	<input type="checkbox"/> Architecture	<input type="checkbox"/> Mechanical	<input type="checkbox"/> Electrical	<input type="checkbox"/> Others
Description of work to be performed:					
Supply and Installation of Fire Rated Steel Doors for Penthouse and Plant Room Additions					

<p>Sub-Contractor / Supplier Detail:</p> <p>Name: Concorde Technical Est. Trade: Fire Protection, Water and Wastewater Treatment and Environmental Specialist Experience: 40 years in the industry Location: Abu Dhabi, UAE Address: PO Box.2617 Contact Name: - Mobile phone #: +971 2 5575551 Is the company certified against any quality standards: ISO 9001:2015 Certified, Certificate No. AQU-10500, Valid until 9 July 2022 Adherence to quality system: Quality Management System is provided Adherence to HSE: Safety Management System is provided Is the company OHSAS 18001 (Health and Safety Certified): (Health and Safety Certified) BS OSHAS 18001:2007 Certificate expired on 11 March 2021, ongoing renewal of certificate. ISO 45001:2015 Certified, Certificate No. IND18.5248U/E 3-20, Valid until 15 Aug 2021</p>	<p>Attachment:</p> <p>Chamber of Commerce: <input type="checkbox"/></p> <p>UAE License: <input type="checkbox"/></p> <p>Municipal License: <input type="checkbox"/></p> <p>Other Licenses: <input type="checkbox"/></p> <p>Pre-qualification: <input type="checkbox"/></p> <div style="border: 1px solid black; padding: 5px; text-align: center;"> </div>
---	---

Contractor Signature and Stamp:	Date
 LEONKA 20/03/21	Aly Nour 20/03/2021
Received By	Date
	20/03/2021

The Engineer:

A- Approved B- Approved with Comments C- Revise and Resubmit D- Rejected E- Approved with Comment/Resubmit

Comments:

See attached comments

RECEIVED

01 APR 2021

BY:

ORIGINAL

**ABU DHABI COMMERCIAL ENGINEERING SERVICES
REQUEST FOR APPROVAL OF SPECIFIED MATERIALS**

Project Name: Comm. Devt for Mr. Mohammed Salem Mohammed Al Rashidi File No. 2696
 Consultant: Bainona Engineering Consultancy Ref No. AGCE/2696/MAT/ARC/051-4
 Contractor: Al Eslah General Contracting Est. Date 9/Feb/21

Structural Architectural Electromechanical Others

Item description : Fire Rated Steel Doors

List of Supplier/ Manufacturer as per specification

- 1-
- 2-
- 3-

References (pages and item numbers) to

- 1- BOQ: 8.3,8.3.1-8.3.3.8
- 2- Particular Specs:
- 3- General Specs.Section-08110
- 4- Drawings No.

BAINONA Engineering Consultancy
 Project 1421
 Mohammed Salem Al Rashidi
 Sector RW-2, Plot No 4
09 FEB 2021
 1:49 pm
RECEIVED

Submitted Material Details

Supplier/ Manufacturer Name: Concorde Technical Est. Catalogue No.
 Brand Name: Reference pages in the catalogue:
 Applicator name: Al Eslah Contracting Model/ Article Nos.
 Remarks:

AL ESLAH GENERAL CONT. EST.

Originator of the submittal/ Eng.: Eng. Akram Issa BLDG. : MOHAMMED AL RASHIDI
 Contractor Authorizes signature: Date: 9/Feb/21
 PROJ.NO. : ESL/02-22/125

The Contractor Statement: We certify that the materials submitted herewith has been reviewed in details and in compliance with the contract drawing and specifications except as otherwise stated hereabove.

Consultant Comments:

Approved as noted -B-
 → Refer to Engineer's Comments in attached transmittal sheet.

A: Approved B: Approved as noted C: Revise & Resubmit D: Not Approved

Reviewer of the submittal: Eng. *[Signature]*
 Consultant Authorizes signature: *[Signature]*
 Approval or Comments does not relieve the contractor from his contractual obligations & responsibilities
 Date: 16.02.2021

ADCE (Abu Dhabi Commercial Engineering) Received

A: Approved B: Approved as noted C: Revise & Resubmit D: Not Approved

Date:

All the supportive documents must be presented and filed at project site.

The Alternative materials should be submitted to ADCE for review with all the supportive documents, Original catalogues and compliance chart





Project Name: Red Crescent Authority Al Ain Admin Center

Employer: Emirates Red Crescent

Consultant: Bainona Engineering Consultancy LLC **Contractor:** Al Eslah General Contracting Est.

SAMPLE TAG

Material Submittal Ref.: MS/821/CVL/036 **Rev. :** 00 **Date:** 25-11-2020

Discipline: Civil Architecture Mechanical Electrical Others

Sample Description: Steel Door

Area of Use/Application:

Manufacturer: Concord

Sample Size: As Actual

Sample Finishing: As specification

Sample Color/Code: 9010

Remarks:

Main Contractor Signature:

Consultant Comments:

No objection to proceed subject to full compliance to project specs and civil defense requirements.

Reviewed By & Signature: (The Consultant)

A- Approved B- Approved with Comments C- Revise and Resubmit D- Rejected

Client Comments:



Approved By & Signature: (The Client)

A- Approved B- Approved with Comments C- Revise and Resubmit D- Rejected

Sample Photo





MATERIAL / EQUIPMENT SUBMITTAL

Project	Mirdif Hills Development		
Client	Dubai Investment Real Estate Company	Serial No.	ECC-MS-A-0106 R.1
Consultant	A2Z Architectural Engineering Consultancies	Prev. No.	
Contractor	M/s Engineering Contracting Company L.L.C	Date	2nd October 2018

Item Description:	Fire Rated Galvanized Steel Doors & Frames -90/120 mins Fire Resistant Rating(BM Trade Approved) - Powder Coating Color Options 1. Facade 1303, Beige SMO (1216558) 2. PE-F1303 RAL1019 SMO (1001392) 3. Matt Gatman Charcoal Grey (UPE818560)	List of Enclosure:
Location:	Proposed Steel Door for the Following: 1. Door Type EXD-050; EXD-051; EXD-200 & EXD-201. As per RFI no. NV-NA-A-0140 2. Fire Rated Doors for MEP Services at Basement 3. Staircase SD-01 at Basement 4. External Wooden Door for Staircases, Passage to Steel Staircase & Garbage Room at Lower Roof (Refer to attached highlighted drawings)	<input checked="" type="checkbox"/> Material Selection & Sched/Compliance Statement
Ref. (Spec, BOQ, Dwg):	RFI-NV/NA-A-0140 R.00 & R.01	<input checked="" type="checkbox"/> Technical Data Sheet/Test Report
Manufacturer / Supplier:	Bristol Fire Engineering LLC	<input checked="" type="checkbox"/> Contractors Statement
Country of Origin / Brand:	UAE	<input checked="" type="checkbox"/> Civil Defence Certs/ Co. Trade License
Reason for Alternative:		<input checked="" type="checkbox"/> Others: Drawings/Color Sample
Contractor's statement: we confirm that we have checked all items submitted herewith and found them to be compliant with the specifications and fit to the required purpose except:		

Submitted by Contractor:	Received by Engineers:
Name: Mr. Mohamed Kamil Project Manager Date: 2nd October 2018	Name: _____ Date: _____ By: _____ Time: _____

Civil / MEP Engineer's Instructions and Comments: Date: _____

① Comply with All Authorities requirements DED, Jcabin, fire door standards.

② Location of the fire doors approval subject to shop drawings approval & Value Engineering.

③ Fire rated hardware / ironmongeries are required for all door, Dubai Civil defence certificate etc.

④ Colors approval for door & frames subject to Client approval.

⑤ Arrange a factory visit for Engineer.

⑥ Door leaf Top 'U channel' to be covered properly.

⑦ Hardware approvals to be obtained.

Area Manager's Comments:

3:32
14 OCT 2018

The above submittal is: Approved Approved as noted Rejected Rejected

Area Manager:	Signature & Stamp:	Received by Contractor:	Signature & Stamp:
Name:		Name:	
Date:		Date:	



REQUEST FOR MATERIAL APPROVAL

MAC Ref. No	I10251-G.1.4-297 - 0
Category	(CIVILS)
Date :	24-Mar-16
Prev. MAC Ref. No.:	
Date	

Project : KING FAISAL CORNICHE DEVELOPMENT

To : MSCEB, (Juffair Office)

Attn : Mr.Vijay Kumar, Sr.Project Manager

From : Nass Contracting Co. WLL

Works : Metal doors for the project, Fire rated, Single and Double leaf
 We request approval of the following material to be used in the above works :

- Material Proposed : Bristol Metal Doors
- Complies with Spec : Yes No Alt.Material Form Attached
- Description and Location of use : Metal Doors at Basement, Ground and Lower Roof level
- Contract Specification Reference : Contract Specification 08 11 13, IFC drawing A6.201
- Manufacturer : Bristol Fire & Metal doors
- Product Code : All Metal Doors MD 1,1A,2,3,4,6,6A,7,8,9,12A,13,14,15,16 &17
- Local Supplier / Agent : Banz Trading & Contracting
- Estimated delivery period : 10 Weeks
- Estimated date required at site : 24-Mar-16
- Enclosures – Sample / Cat / Test Results etc : COMPLIANCE STATEMENT & CATALOGUE

Note: Model No. / Product Codes need to be highlighted on the attached catalogues.

For the Contractor :

Name: **Simon Hill** Designation: **Senior Project Manager** Signed:



Comments by **MSCEB**: FULL SIZE OR MINIATURE SAMPLE TO BE SUBMITTED FOR APPROVAL
 * COLOR - METALLIC RAL 9007/9006
 Status: (submit samples)
 A) Approved B) Approved subject to comments

Employer Rep:

Comments:

No Objection

Rejected

Sign: *ma*

make up needed
 Date: 31.3.16

D) Not Approved C) Revise & Resubmit, Material can be used

Signed: Date: 28.03.16

CC: AECOM, HA

Received by Contractor: _____

Date: _____

Note: The above approval does not relieve the Contractor from his responsibilities to ensure that the material to be used shall be in accordance with specification and IFC drawings requirements.



Project Title * [ENG-Z3/4-00121 - Design and Build LIU Phase 5A](#)

Document Type * Prequalifications

Doc Date * 05/10/2021

Transaction ID 14978

Reference # * [KAB-TIP-PH5A-PQ-032](#)

Is this Revision?

Revision Number 1

To Name * Dr. Jaber Shurrab

To Company [TIP-PED - TIP-Projects Execution Dept, TIP](#)

For Information?

From Name Yasir Asif

From Company [KIC - Kabri International Contracting](#)

TIP Project Manager Dr. Jaber Shurrab

Subject * PRE-QUALIFICATION DOCUMENTS – CONCORDE TECHNICAL EST

Description PRE-QUALIFICATION DOCUMENTS – CONCORDE TECHNICAL EST - FIRE RATED STEEL DOORS

Status Approved as Noted

Comments Dr. Jaber Shurrab (06/10/2021 16:57): 1. All materials and works inspections to be submitted to TIP for review and approval 2. Method statement & shop drawings to be submitted for approval 3. The contractor to submit mockups for approval. 4. All works and materials should be in compliance of ADCD requirements

Attachments * [KAB-TIP-PH5A-PQ-032 - PQ for Concorde Technical Est.pdf](#)

Sherif Mohammed
ADNOC HQ

Final (WF-008122) ADNOC - Construction - MAR (Arch) -...
WORKFLOW TRANSMITTAL

11:47 AM
ADNOC HQ-WTRAN-026769

CONSTRUCTION OF GROUP SERVICE HUB

ADNOC HQ
ADNOC HQ
United Arab Emirates

**MAIL TYPE**

Workflow Transmittal

MAIL NUMBER

ADNOC HQ-WTRAN-026769

REFERENCE NUMBER

ADNOC HQ-WTRAN-026769

Final (WF-008122) ADNOC - Construction - MAR (Arch) - Rev.0 - Ver.1

From Mr Sherif Mohammed - ADNOC HQ

To (6) Mr Omar Al Ramahi - ADNOC HQ (+5 more...)

Cc Mr Ameer Bahaisami - ADNOC HQ

Sent Tuesday, 7 September 2021 11:47:33 AM GST (GMT +04:00)

Status N/A

DOCUMENT ATTACHMENTS (1)

(0 selected)

File	Document No	Revision	Revision Date	Title	Status
	MAR-4700006964-C-0096	0	01/09/2021	MAR FOR METAL DOORS (NON - FIRE RATED AND FIRE RATED STEEL)	B - Approved with Comments

MESSAGE**Workflow Review History**

The attached documents have completed the "ADNOC - Construction - MAR (Arch) - Rev.0 - Ver.1" workflow with the following results :

This transmittal was automatically generated.

Doc No	Step	Participant	Review Outcome	Comments
MAR-4700006964-C-0096	ADNOC DC QA Check	R Juliano	A-Approved	
	ADNOC Sr. Discipline Eng. Review	O Al Ramahi	B-Approved with Comments	1. Proposed materials are accepted in principle, Color



HAIL AND GHASHA ARTIFICIAL ISLANDS
CONSTRUCTION PROJECT
PROJECT n° 4361409



INSPECTION AND/OR TEST REQUEST

ITEM TO BE INSPECTED AND/OR TESTED : SAMPLE INSPECTION-BUTINAH		ITR n° CN0000-70-ITR-11666 (rev. 0)
FIRE RATED STEEL DOORS,FRAMES,HARDWARE AND ACCESSORIES		Area Emarat precast yard, Mussafah Abu Dhabi
1. Supplier/material description > MAR- BT0079-58-MAR-0518		ITP n° CA0000-70-ITP-0113 (CODE 2)
2. Storage Location > Emarat Europe office , Mussafah Abu Dhabi		ITP items 1 - Materials (1.03)
		Drawing n°

SKETCH TO BE ATTACHED TO SHOW THE LOCATION(S) :

READY FOR INSPECTION AND/OR TEST : DATE : **18 July 22**
TIME : **09.00 AM**

REQUEST INITIATED BY SUBCONTRACTOR QA/QC	Arman Dacuycuy (EEP QA/QC Engineer)	DATE : 17 July 22 TIME : 09.00 AM	SIGNATURE ^{Pos} <i>[Signature]</i>
RECEIVED BY CONTRACTOR ENGINEER	Syed Siddiq HUSSAIN (NMDC Project superintendent)	DATE : 17 July 22 TIME : 09.00 AM	SIGNATURE : <i>[Signature]</i>
RECEIVED BY CONTRACTOR QA/QC	Anish BASHEER (NMDC QA/QC Engineer)	DATE : 17 July 22 TIME : 09.00 AM	SIGNATURE : <i>[Signature]</i>
RECEIVED BY INDEPENDENT TESTING LAB (ITL)	Alquinn LAPUZ (AHSL Laboratory Supervisor)	DATE : 17 July 22 TIME : 09.00 AM	SIGNATURE : <i>[Signature]</i>
RECEIVED BY THIRD PARTY INSPECTOR (TPI)	- (-)	DATE : TIME :	SIGNATURE :
RECEIVED BY COMPANY	ADNOC / THE COMPANY	DATE : 17 July 22 TIME : 09.00 AM	SIGNATURE : <i>[Signature]</i>

CONTRACTOR QA/QC INSPECTION REVIEW, RESULTS AND COMMENTS <i>Butina Sample Inspection done and found Satisfactory</i>	CONTRACTOR ITP LEVEL <input checked="" type="checkbox"/> (H) - HOLD <input type="checkbox"/> (W) - WITNESS <input type="checkbox"/> (S) - SURVEILLANCE <input type="checkbox"/> (R) - REVIEW
INDEPENDENT TESTING LABORATORY (ITL) COMMENTS	ITL ITP LEVEL <input type="checkbox"/> (H) - HOLD <input type="checkbox"/> (W) - WITNESS <input type="checkbox"/> (S) - SURVEILLANCE <input type="checkbox"/> (R) - REVIEW
ADNOC THIRD PARTY INSPECTOR (TPI) COMMENTS	TPI DETAILS Company : Name : Designation :
ADNOC REPRESENTATIVE COMMENTS <i>frame shall be RAL 8007 & leaf shall be RAL 9001</i>	ADNOC ITP LEVEL <input checked="" type="checkbox"/> (A) - APPROVAL <input type="checkbox"/> (W) - WITNESS <input type="checkbox"/> (S) - SURVEILLANCE <input checked="" type="checkbox"/> (R) - REVIEW

THE WORKS ARE :	<input checked="" type="checkbox"/> APPROVED <input type="checkbox"/> APPROVED AS NOTED <input type="checkbox"/> NOT APPROVED	ADNOC Representative : <i>Omar Ahmad</i> Date/Time : <i>18/7/2022</i> Signature : <i>[Signature]</i>
-----------------	---	--

ITR RETURNED TO CONTRACTOR :	<input checked="" type="checkbox"/> ITR STATUS REVIEWED <input type="checkbox"/> ACTION REQUIRED ? <input checked="" type="checkbox"/> ITR FILED	NMDC Representative : <i>ARAFATH</i> Date/Time : <i>18-July-22</i> Signature : <i>[Signature]</i>
------------------------------	--	---



مركز الحفر والبحار
الوطنية
NMDC

HAIL AND GHASHA ARTIFICIAL ISLANDS
CONSTRUCTION PROJECT
PROJECT No. 4361409



MATERIAL APPROVAL REQUEST (MAR)

Ref. No. **BT0079-58-MAR-0518** Rev. No. **A01** Date **13-Apr-2022** S/C Ref. **EE-P555-PM-TRO-22-261**

Material Description : Fire Rated Steel Doors, Frames, Hardware and Accessories

Trade Name	Manufacturer	Supplier :	ADNOC Reg. No.
Fire Rated Steel Doors, Frames, Hardware and Accessories	M/s: Bristol Fire Engineering LLC / Concorde Technical Establishment	M/s. Emarat Europe Fast Building Technology Systems Factory L.L.C (PQD Ref No: CA0000-58 PQD-0002)	20009469

Specification requirement detail	Reference: BT0079-37-SPE-033	Discipline: Civil
----------------------------------	------------------------------	-------------------

Location / Area of use	Fire Rate Steel Doors for Bu Tinah Building
------------------------	---

Technical details	Please refer to Technical Data Sheet
-------------------	--------------------------------------

Attachments:

No.	Description	Yes	NA	Other supporting documents (list) :
1	Specification comparison Sheet	<input checked="" type="checkbox"/>	<input type="checkbox"/>	
2	Sample & Sketches	<input type="checkbox"/>	<input type="checkbox"/>	
3	Brochure	<input checked="" type="checkbox"/>	<input type="checkbox"/>	

NA :- Not applicable

Notes/Comments:

For CONTRACTOR

Name : Peter James Marvin Project Director Signature: Date:

For ADNOC (1) Accepted (2) Accepted subject to comments (3) Incorporate comments, resubmit before proceeding (4) Not accepted

Comments:

Refer to attached CRS.

for/
Name : Mohamed Ahmed Al Hosani
Sr. Project Manager

Signature:

Date: 01/05/2022



EPC FOR BU HASA INTEGRATED FIELD DEVELOPMENT PROJECT



		Project No: 80057
SUBCONTRACT No. & DESCRIPTION:		
80057-ZA-C01-K: Civil and Building Works on Plot		
DOCUMENT NUMBER:		REV.
NBT-MAR-12-99-93-0198		1
DOCUMENT TITLE:		
MAR FOR STEEL DOORS - ETR/ITR BUILDING (PLAT - 14), ADMINISTRATION BUILDING (CDS), NEW CONTROL BUILDING (GLCS), GUARD ROOM (GLCS), 33KV SUB-STATION BUILDING (GLCS) (M/S CONCORDE TECHNICAL EST)		
DOCUMENT STATUS		
<input type="checkbox"/> CODE 1 – APPROVED <input checked="" type="checkbox"/> CODE 2 – APPROVED WITH COMMENTS		
<input type="checkbox"/> CODE 3 – REVISE AND RESUBMIT <input type="checkbox"/> CODE 4 – REJECTED		
<input type="checkbox"/> CODE 5 – FOR INFORMATION		
<p>THE FACT THAT IT HAS "ACCEPTED WITHOUT COMMENTS", DOES NOT RELEASE THE SUBCONTRACTOR FROM HIS RESPONSIBILITIES IN TERMS OF COMPLIANCE WITH ALL CONTRACTUAL REQUIREMENTS</p> <p>THE DOCUMENT ACCEPTANCE PROCESS IN ORDER TO GET THE "ACCEPTANCE" WITHOUT COMMENTS" DOCUMENT DOES NOT ENTITLE THE SUBCONTRACTOR TO CONSIDER REPERCUSSIONS TO DEADLINES OR CONTRACTUAL AMOUNT</p>		
NAME		DATE:
Rammohan sethuram		27-10-2021

Subject to the approval of the shop drawing for doors.

Doors to be manufactured in compliance with the approved shop drawing

SCS A 0014		COMMAND OF MILITARY WORKS		قيادة الأشغال العسكرية	
الطبعة .Rev		التاريخ Date		طلب إعتقاد مصادر خارجية	
00		17-Nov-21		OUTSOURCING PROPOSAL	
CMW-21002-C001-SCS-A-0014		Full مرجع الوثيقة الكامل		C001 - 21002	
Contract No.		Document Reference		رقم العقد	
اسم العقد		انشاء مختبر مركزي للتشخيص الجزئي و فحص الحمض النووي لفيروس كورونا المستجد		Contract Name	
من		To		From	
من		إلى		سيكس سيجميا ميديل ابيست كونستركشن	
عنوان التقديم:		SUBMITTAL TITLE:			
المنشأة		منطقة		مستوى الطابق	
Facility		Zone		F. Level	
التخصص		CSI ID		WBS ID	
Discipline		بوابة Gateway		Architectural	
النوع		Vendor		Subcontractor	
Type		مورد		مقاول باطن	
الرقم		وصف الأعمال		الشركات المقترحة (3 على الأقل)	
Ser.		Works Description		Proposed Companies (at least 3)	
1		FIRE RATED STEEL DOORS WORKS		Concorde Technical Est	
2				Bin Dasmal Doors	
3				Vulacn Industries LLC	
4		القيمة المقدرة بالأعمال المطلوبة (بالدرهم): Estimated Value of Works Required (Dhs):			
يجب على المصدر أن يشهد بأن كل المعلومات التي أصدرت تحت هذا التقديم قد تم التحقق منها ووجدت مطابقة مع وثائق العقد * الحالة يجب تعطي بواسطة المراجع الأخير. The Issuer certifies that all information issued under this Submittal have been verified and found to be in compliance with the Contract documents. * To be filled by the FINAL Reviewer ONLY using the key Code below					
FOR THE ISSUER		التاريخ		التوقيع	
Issuer STAMP		Date		Signature	
17-Nov-21				QUSI TAREQ	
الإسم				Name	
المصدر					
ملاحظات و مراجعة التقديم					
مهندس الموقع / مهندس الموقع للإستشاري					
Site Engineer / Consultant Site Engineer					
الإسم		التاريخ		التوقيع	
Name		Date		Signature	
24/11/2021					
المهندس المختص / اللجنة المختصة					
Specialist Engineer / Specialist Committee					
Concorde Technical Est is approved for fire rated steel doors. Contractor to submit shop drawings for final approval.					
حالة المراجعة (من خلال آخر موافق)					
Review Status (by Final Approver)					
REJECTED		NO OBJECTION - AS NOTED		NO OBJECTION	
مرفوض		موافق مع الملاحظات		موافق	
25/11/2021					
الإسم		التاريخ		التوقيع	
Name		Date		Signature	
م. علي الزعبي					
FOR THE ISSUER					
Receiver STAMP		التاريخ		التوقيع	
Date		Signature		Name	
28.11.2021				قهن حادرت	